

HAWAII MARINE

Voluntary payment for delivery to MCAS housing/\$1 per four-week period.

Abandoned vehicles towed

by SSgt. W.S. Saunders

The Military Police Department has stepped up its efforts to alleviate the abandoned vehicle problem and reduce the number of injury accidents involving motorcycles and mopeds at the Air Station.

"The Air Station has become a haven for derelict vehicles and the vehicles have become prey to parts scavengers," said GySgt. S.D. Jensen, Accident Investigation chief. "To alleviate this problem, all vehicles not meeting the requirements for a Station decal, temporary visitors pass or deadline pass will be towed off the Station starting Aug. 15.

According to Jensen, these problems are command-oriented.

"A Marine transfers to the mainland and leaves his vehicle for spare parts for someone in his old unit. The vehicle is then stripped and two months later the unit calls us to have it towed," said Jensen.

"If a Marine is transferring and doesn't want his vehicle," continued Jensen, "he's better off trying to sell it in town. Leaving it at the Air Station costs the registered owner if it's towed."

Vehicles of deployed Marines are also a problem. "A lot of them live in the barracks and leave their vehicles in parking lots throughout the Air Station," said Jensen.

According to 3d Marines Regimental Order 4050.2, the facility for vehicle storage of

deployed Marines is located at the Pearl City warehouse compound. Deployed personnel, however, may leave their vehicles in unit or common-area parking lots with the approval of the area commander. A copy of the approved request should be forwarded to the Military Police Department to avoid any inconvenience.

"Illegally parked vehicles that are a traffic hazard, block normal flow of traffic, are stripped or vandalized, have been issued a second removal notice within a 30-day period, or have been illegally brought on the Station by a driver with a suspended or revoked license, will be removed immediately," Jensen said.

Another problem the MPs are

attempting to alleviate, is the amount of motorcycle/moped accidents which involves Marines and their dependents at the Air Station.

"Of all the motor vehicle accidents reported, 50 percent involved motorcycles and mopeds," said SSgt. J. Treichel, accident investigator. "Of these, 77 percent had the operator sustaining injuries."

To reduce the number of motorcycle/moped injury accidents, the MPs have stepped up their periodic gate checks.

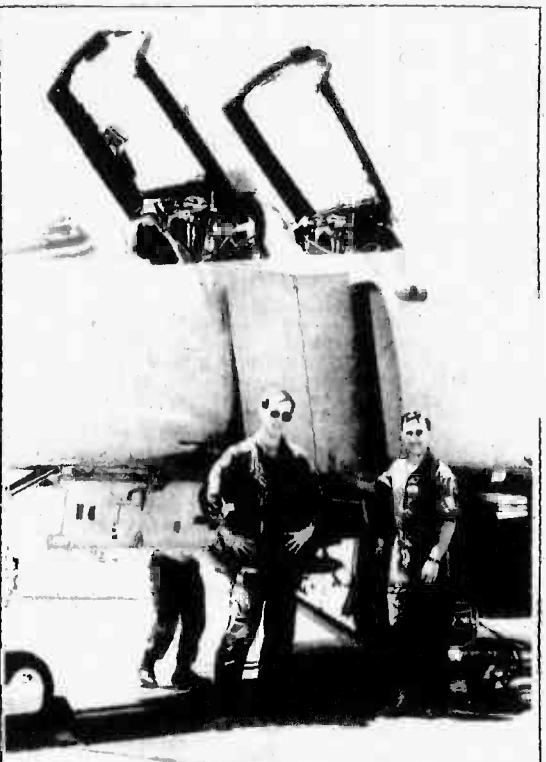
"The purpose of the checks is to ensure that cyclists and motorists comply with state and Station regulations, and make them aware of the problems of operating a motorcycle/moped in Hawaii," said Jensen.

If stopped, the motorist/cyclist must have, in his or her possession, Hawaii no-fault insurance card, valid driver's license, valid state registration and safety inspection. Cyclists must have a motorcycle safety card issued by the Air Station.

Moped operators must be 15 years old, and have a Hawaii driver's license, with current city and county registration.

When discrepancies are found, the operator will be issued a citation by the MPs and will have to report to the Accident Investigation section at the Military Police Department within five working days, with the discrepancies corrected. If the discrepancies are not corrected, the operator will be issued a Federal Magistrate Citation, be fined, have the decal removed, and the vehicle escorted off the Air Station.

"Community involvement is appreciated in assisting the MPs in alleviating the problem of abandoned vehicles and motorcycle/moped safety," said Jensen. "We will have a one-Station a safer, more pleasant place to live."



PHANTOM MALFUNCTION — Capts. Allan Polley and Jim Estes, radar intercept operator and pilot respectively with VMFA-232, stand beside their F-4 Phantom after a flight mishap July 28. The Phantom had an engine failure during a routine training exercise in the Kalua Rock area, and limped 180 miles back home, a flight of approximately 40 minutes. "Losing an engine is always serious," said Estes. "It's no problem flying with one engine unless that engine also gives out. Then you're in trouble." According to safety officials at MAG-24, the Air Station had approximately five single engine failures in the past year, a number kept low by safety precautions, pilot training, and the traditional reliability of the Phantom. (Photo by Sgt. Christopher Wood)



PREPARATION — SSgt. Doug Millette, H&HS, draws blood. Story on Page A-2. (Photo by Sgt. Mark Minamoto)

Camp Tarawa memorialized on Big Island

Story and photos by Sgt. Chuck Jenks

KAMUELA, Hawaii — On the eve of our nation's 208th birthday another celebration was taking place on the rolling plains

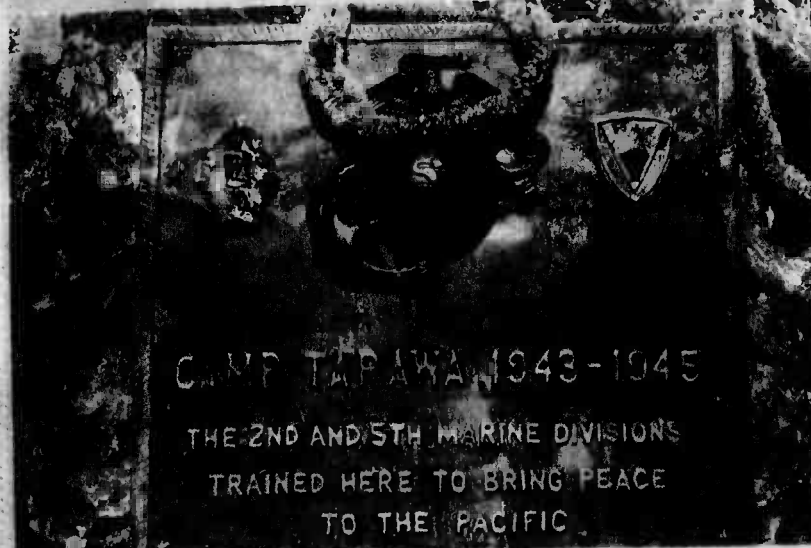
of the Big Island of Hawaii honoring America's patriots who answered an earlier call in the defense of freedom. For these sons of America, that call arose not from Lexington but from the carnage of Pearl Harbor.

The July 3rd dedication ceremony for the memorial was the culmination of an idea and a desire by the people who remembered Camp Tarawa and the members of the Waimea Exchange Club on Hawaii. A

year in the planning, coordination and construction, the massive monument serves as a constant reminder of a significant period in the history of the town of Kamuela and in the lives of thousands of men and women.

my heart is filled with pride and I am grateful that we honor this spot. It's a great thing that there

was such a generation of men just when America needed them." See Tarawa Page A-4



NEW MONUMENT — The plaque marks the spot where Camp Tarawa used to be home for the 2d and 5th Marine Divisions during World War II. Camp Tarawa was on the big island of Hawaii from 1943 to 1945, and became the camp where those divisions trained for the famous battles on Saipan, Tinian and Iwo Jima.

Fittingly, the solemn ceremony began with Marines of Fleet Marine Force, Pacific presenting the national colors. Short speeches followed by Hawaii Congressman Daniel Akaka; Richard Smart, owner of the Parker Ranch, the largest privately owned ranch in the U.S. and the former site of Camp Tarawa; Richard L. Jeffrey, president of the Waimea Exchange Club; and spokesmen from the 2d and 5th Marine Division Associations who offered historical perspectives on the Camp and the Marines who trained there.

"It sometimes feels as if it all happened eons ago," remembered Charles M. Nightingale, 5th Marine Division Association and former combatant on the shores of Iwo Jima.

"I can picture the hundreds of pyramid-shaped tents that was home to those leathernecks of the 5th. The young Marines, spry and ready for battle, clambering up the steep pastures during days of intense training. Camp Tarawa was ideal for training for Iwo and



THE FIRST TO FIGHT — Smoke Powers, a former 2d Marine Division leatherneck, talks about the bloody fight on Tarawa during ceremonies dedicating the Camp Tarawa Memorial Monument on Hawaii, July 3.



Body Marine's wife displays her winning form
Page B-1

Kamuela Peaceful valley becomes home for Marines
Page A-4



Golf AF Falcons fly to HASAC victory
Page B-1

Marines furnish lifesaving blood

Story and photo by Sgt. T.M. Anthony

A team from the Blood Bank at Tripler Army Medical Center held a blood drive here July 23, taking donations from more than 50 servicemembers.

Cpl. Terrence Pezoz, Comm. Spt. Co., was somewhat apprehensive about donating blood for the first time. "I was worried that I might pass out," said Pezoz, "but when it was over, I felt fine. I knew it was a good thing to do."

It was also the first time for PFC Randy Peterson, Comm. Spt. Co., who said he "wasn't nervous at all. It's nice to be able to help people and I might need blood someday," added Peterson.

Cpl. John Montgomery, Comm. Spt. Co., has been donating since he was 17. "When I was 16, I was involved in an incident where I suffered nose lacerations and lost a lot of blood," said Montgomery. "I received blood from someone I didn't even know, which saved my life. Now I donate whenever I can."

PFC Charles John Cotton, SOMS, once donated blood for his father who was undergoing an operation. It wasn't his first time nor will it be his last. Cotton said that he gives blood whenever he can.

LCpl. Scot Connor, SOMS, brought a book along to take his mind off the actual donating process. "Donating blood was not as bad as I had expected," said Connor. "I'll be glad to give again."

The Blood Bank receives from 20 to 50 units of blood a day. On this particular day, Tripler Hospital had in its care four premature babies who needed blood transfusions. "The lungs of a premature baby do not function well and fresh blood provides more oxygen carrying capacity," said Mark Minamoto, a medical technologist with the Blood Bank.

According to Minamoto, blood also contains several clotting factors which are used to make platelets. "If a person cannot stop bleeding," said the medical tech, "the platelets are used to help stop the blood flow. An average adult would need six platelets, which means six donors," said Minamoto.

Blood can be stored up to 30 days but platelets can be kept for only five days. "We never throw blood away," said SSgt. Raul Gonzalez, the NCOIC of the donor center at the Blood Bank. "It's always used before the storage date expires."



BLOOD TEST — SSgt. Raul Gonzalez draws a few drops of blood from Cpl. John Montgomery for testing.

'Flash Gordon'
The Honolulu Theatre for Youth will present "Flash Gordon Conquers the Planet of Evil" at 7:30 p.m. Aug. 3-7 at McCoy Pavilion in Ala Moana Park, and Aug. 11-13 at Leeward Community College Courtyard. An elaborate set features a 1930s-style spaceship, a laboratory and the town of Hincley, Ohio, all rolled into one. Up to 1,000 people can be accommodated for performances in the Banyan Court of McCoy Pavilion. Free tickets for each show will be distributed at 6 p.m. No tickets are needed for the Leeward performances. For information, call 521-3487.

CREDIT PROBLEM?

You'd like to buy a new or late model used car, but feel that your credit is insufficient. You may be new to Hawaii or have recently changed jobs. You may have recently been turned down for a car loan. Well, **WORRY NO MORE • WE HAVE GOOD NEWS FOR YOU.** Our credit requirements are easier than you think. Our rates are competitive AND we have terms to 60 months. You may qualify for a loan with a small down payment or just your trade-in. **CALL TODAY . . .** We'll give you the personal attention that you need to get your loan approved!!! Call Dan or Stan 487-7974

VOLVO HAWAII

JIM SLEMONS IMPORTS
Open 8 a.m.-9 p.m. Mon-Fri.
9 a.m.-6 p.m. Sat.
10 a.m.-5 p.m. Sun.
Financing available on approved credit.
Military financing available.

Family Dentistry EVENING APPOINTMENTS

SAVE TWO WAYS

Save your hard earned money by not having to take off work to visit the dentist. Save on our reasonable prices for all family dental services. We accept MasterCard and VISA.

At Reasonable Prices

Finally, a half-million dollar complete dental center is open for all Windward residents. Fully computerized for more efficient handling of all paperwork as well as fast appointment scheduling. Ten complete dental rooms equipped with the finest equipment. A special kids' area with free video game and a zoo of furry animals. Plenty of free parking and for your convenience, the bus stops right in front of our door. Drop by, look around and meet our friendly staff and doctors.

We Welcome All Insurance • DSSH • IIMS • DDS-82 • DentalGuard • HDS • All Others

Servicing all Windward Families



Phone: 254-1541

Pali Palms Plaza

(1st Floor) 970 N. Kaliahoe Ave.
Next door to the Yum Yum Tree
Across from the Alkahi Park Shopping Center

Neck Pain? Backache?
Don't Suffer Needlessly!

Pacific Chiropractic

TRAINED IN 5 RECOGNIZED TECHNIQUES INCLUDING "LOW FORCE"

DR. JEANNE MICHAELS
R.N. DC.

COMPLETE PHYSICAL EXAM
X-RAY FACILITIES

SPECIALIZING IN:
• ON THE JOB INJURIES
• AUTO ACCIDENTS
• SPORTS INJURIES
• CHRONIC & DIFFICULT CASES
• GENERAL PRACTICE
• FAMILY CARE PLAN
• PERSONALIZED CARE

602 KAILUA RD. NO. 207, KAILUA
(between Cornet & Hardware Hawaii-2nd floor rear)
NO CHARGE FOR BRIEF SPINAL ANALYSIS

261-0831



WINDWARD ENLISTED CLUB

ALL YOU CAN EAT!

SPECIAL BUFFET

- PRIME RIB ■ CRAB ■ LOBSTER
- SHRIMP ■ BAKED POTATO
- COMPLETE SALAD BAR

For **12.50**

Wednesday, August 15

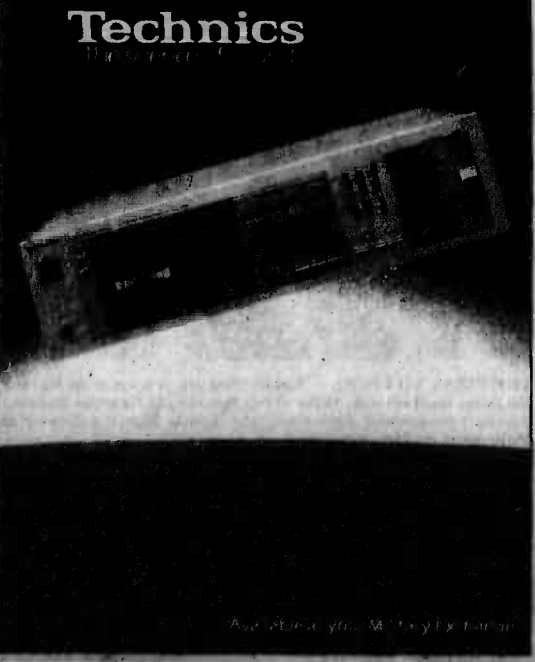
5-9 P.M.

Reservations Suggested

Kaneohe Marine Corps Air Station

Raise home entertainment to a new level of satisfaction

Add impact with a new TV/FM/AM Stereo Receiver from Technics. They deliver a spacious stereo effect that can make ordinary TV sound extraordinary with one simple connect box. And of course, these advanced receivers are all built ready for night audio, VCR, video, for cable TV, and cable FM hook up. The Computer Drive New Class A Receiver is the ideal Amp circuit for demodulating digital sound like the Compact Disc.



HAWAII MARINE

The Hawaii Marine is an unofficial newspaper published every Thursday by RFD Publications, Inc., 46-016 Alaloa St., Kaneohe, Hawaii 96744, in the interest of U.S. Marine Corps personnel in Hawaii. All news copy is prepared in the Joint Public Affairs Office, Marine Corps Air Station, Kaneohe Bay, Hawaii 96863, 257-2179. Copy must be submitted no later than noon Thursday for the following Wednesday publication. Hawaii Marine solicits contributions of information and photographs from all Marine Corps organizations. However, it reserves the right to edit or rewrite material submitted. All advertising is arranged by the publisher, RFD Publications, Inc., telephone 235-5881. Circulation is 8,000. Everything advertised in this publication must be made available for purchase, use or patronage without regard to race, creed, color, national origin, age or sex of the purchaser, user or patron. A confirmed violation or rejection of this policy of equal opportunities by an advertiser will result in the refusal to print advertising from that source.

At a glance

Preventive dentistry

The next Preventive Dentistry Program is scheduled for Aug. 11. Parents may begin making appointments for their children. The dental program for dependents is limited to relieving pain in severe emergencies and preventive dentistry only.

Preventive dentistry consists of a dental examination, lectures on dental hygiene and nutrition, and application of stannous fluoride. It does not include X-rays or dental care such as filling cavities.

To make an appointment, call 257-2290.

School physicals

It's that time of year again when school children must have a physical to attend school under Hawaii state law.

Parents should try to avoid the August rush and schedule their children for appointments as soon as possible at the Immunization section of the Kaneohe Branch Clinic.

To schedule an appointment, take your children, their shot cards and health charts to the

Immunization section any Monday, Tuesday, Wednesday or Friday from 8-11 a.m. or any Monday, Tuesday or Friday from 1-3 p.m.

Each child will be given a tuberculosis (TB) test and an eye examination. After the TB test is read two days later by nurse Pat McKinley, an appointment will be scheduled for the final portion of the physical.

For information, contact Pat McKinley at 257-3321.

Breakfast meeting

A Full Gospel Businessmen's

Fellowship International Breakfast meeting will be conducted at the SNCO Club at 8 a.m., Saturday. The breakfast is free to anyone attending their first meeting. For reservations or information call 257-2782/4053.

Prayer service

Thanksgiving and prayer services for the safe return of the MAU will be conducted at the Station Chapel during Protestant worship at 8:30 and 11 a.m. on Sunday.

Guest speakers will be Chaplain W.B. Turner, command

chaplain, 1st Marine Brigade at 8:30, and Chaplain S.L. Schwab, 1st Battalion, 3d Marines at 11 a.m.

A fellowship hours will follow the 11 a.m. service. All members of the returning MAU and their families are encouraged to attend.

Teen skating

Teen-age roller skaters can attend an outing to "Da Rink" in Honolulu Saturday for \$2.50. The outing is sponsored by Dependent Recreation. Buses will leave at 10 a.m. and return at

approximately 4:30 p.m. To sign up call 257-3501 by 5 p.m. today.

Stop smoking

The Navy Regional Medical Center, Kaneohe Branch Clinic, will be offering a "FRESHstart" program to smokers who are willing to attend a four-day course to kick the habit.

The program, free to active duty, dependents, and retired personnel, begins Aug. 4 from 8:30-8:30 p.m. at the training room opposite the pharmacy in the clinic. Classes also will be held on Aug. 6, 11 and 13.

Ice Cream by . . .

La Gelateria

**Burritos
and
Sandwiches**



GLORIOUS FOODS
HAWAII

324 Kuulei Road
Kailua, Hawaii 96734
262-7751

**SORBETTO &
GELATO**
Buy One
ICE CREAM
Get 1/2 off On One
SORBETTO with this
coupon


**OPEN FRIDAY &
SATURDAY** til
11:30 PM
**ESPRESSO &
CAPPUCCINO**
Buy One Get One FREE!
with this coupon

*A Symphony of
Deilght
Pasteries and
Croissants*

**CAFE Au Lait
CAFE LATTE
CAFE VIENNA**

ASK ABOUT OUR

\$3900 FAMILY EYE EXAMINATION PLAN!



SOFT CONTACT LENSES From **\$79**

EXTENDED WEAR LENSES From **\$129**



PRESCRIPTION GLASSES From **\$49**

Effective 'til July 31, 1984
All Contact Lens Fees include Lenses, Care Kit,
Follow-up Care and 90 DAY TRIAL PERIOD.

COMPLETE PROFESSIONAL VISION SERVICES
DEDICATED TO QUALITY AND SERVICE IN VISION CARE

Dr. Charles Dean
Optometrist

KAILUA
139 Hekili St
261-9735

**BEEF
CENTER**

**5%
DISCOUNT
TO THE FIRST
50
CUSTOMERS
& ALL
MILITARY**

**SALE STARTS
TODAY**

**CALL TODAY! YOU'LL NEVER
BUY BETTER BEEF FOR LESS!**



SLASHES BEEF PRICES!

OUR LOWEST PRICES IN MONTHS! MANY ORDERS TO CHOOSE FROM. ONE WEEK ONLY!

FREE!
30 N.Y. STRIP STEAKS

TO THE FIRST 50 CUSTOMERS CALLING TODAY BETWEEN 10AM AND 6PM
 833-0020 Purchase required 4 oz. steaks

U.S.D.A. CHOICE PRIMAL CUTS
\$239 - \$529
 L.B. - L.B.
 T-BONES, NEW YORK STRIPS, SIRLOINS, RIB STEAKS, FILET MIGNONS, RIB EYES, DELMONICO CLUB STEAK, CHATELAIN BIFENNES
 AVERAGE WTS. 50 LBS. AND UP

- NO PAYMENTS FOR 45 DAYS
- NO INTEREST ON CARRYING CHARGES
- NO DOWN PAYMENT
- WE WILL PAY THE INTEREST FOR 6-MONTHS. SAME AS CASH!
- MAKE YOUR MEAT CUTTING APPT. TODAY 833-0020

EXECUTIVE SPECIAL

50 LBS. \$209⁵⁰ ONLY

T-BONES, NEW YORK STRIPES, SIRLOINS, STKS. PORTERHOUSE STEAKS, RIB EYES, DELMONICO, CLUB STEAK, RIB ROASTS
 AVERAGE WTS. 50 TO 100 LBS.



STOCK YOUR FREEZER NOW!

USDA CHOICE BEEF SPECIAL!

260 LBS. FOR ONLY \$39⁶⁷ Per Payment for 6 payments

Plus!

FREE 80 LB. BONUS PACK

- 30 lbs.-GRADE A FRYERS
- 20 lbs.-LEAN PORK CHOPS
- 20 lbs.-SLICED BACON
- 10 lbs.-AM Heat HOT DOGS

ABSOLUTELY NO CHARGE WITH THIS SPECIAL!

INCLUDES USDA CHOICE:

- Sirloin steaks
- Porterhouse steaks
- T-Bone steaks
- Club steaks
- Rib steaks
- Stew
- Strip steaks
- Rib Eye steaks
- Sirloin Tip steaks
- Standing Rib roast
- English Cut roast
- Bar-B-Q Ribs
- Ground Beef

Example:
 200 loin rib, plates & flanks, at 1.19 lb. equal \$238 plus from 80 lb. Bonus pack. Avg. Weights 180-350 lbs.
 INCLUDES SECTIONS 1C, 1B, 2E, 2F, & 2G

USDA CHOICE

WESTINGHOUSE FREEZER

AT WHOLESALE WITH ANY BEEF ORDER OF 150 LBS. OR MORE.

5 CU. FT. CHEST **\$334⁰⁰**

8 CU. FT. CHEST **\$354⁰⁰**

10 CU. FT. CHEST W/LOCK **\$374⁰⁰**

CALL NOW!

FREE!

20 FILET MIGNON STEAKS

FOR ANYONE OPENING A 90 DAY ACCOUNT (contact number)

BEEF CENTER
833-0020

3131 N. HUNTER TRAIL, WASHINGTON, ARIZONA

ALL CREDIT CARDS ACCEPTED
 CASH ADVANTAGE ONLY



TENT CITY — Hundreds of tents sprung from the peaceful Kamuela countryside on the island of Hawaii in 1943 when the 2d Marine Division returned from their bloody victory at Tarawa. The large training base was called Camp Tarawa and

from it were launched some of the most famous battles of the war such as Saipan, Tinian and Iwo Jima. This 1943 photo shows the large concentration of 2d Division tents just before the attack on Saipan. (Photo courtesy of the Parker Ranch)

Tarawa . . .

From Page A-1

The reminiscing of Marines and their camp continued as Smoke Powers, who served with the 2d Marine Division during the assaults on Saipan and Tinian as well as training at Camp Tarawa, said, "We were proud to have served with the 2d Division and to have trained at Camp Tarawa. We were proud to have been called the "First to Fight" and although Camp Tarawa is forgotten to those who didn't sweat and train here, it is sacred ground to those that did.

"We saw the bitter action of combat on Saipan, Tinian and the other islands of the Marianas and the role of the 2d Division in World War II and the Battle of Tarawa, for which the camp was named, will live forever.

"When I returned to this place I finally realized that once a Marine, always a Marine."

Sitting quietly in the back of the crowd of some 100 residents

and Marines was Pepe Kalima, a 72-year-old ranchhand who remembers the Marines when they came to the Big Island.

"This place was crazy in those days," said the native Hawaiian garbed in a feathered cowboy hat, rugged harness boots and turquoise Bolo tie. "There were so many Marines and so much going on that this town had a hard time dealing with it. What I saw, though, was good men; hard, strong, ready to fight. When I saw Marines for the first time I was amazed at how proud they were to be Marines. Despite being so tough, they were honest and true in everything they did. That's what I remember."

"This spot is sacred ground," said Daniel Akaka. "It serves as a marker for those who have none. It pays tribute to the thousands who passed through these Hawaiian shores and died. It marks the deeds of men that tell of bravery and courage. They were the men who fought World War II."

Kamuela hidden valley turned into Camp Tarawa

Story and photos by Sgt. Chuck Jenks

KAMUELA, Hawaii — Kamuela is a quiet little town nestled at the base of 13,000-foot Mauna Kea. Verdant mountain pastures, always a Kelly green, give the cattle ranching community a special down-home atmosphere. Livestock graze without a care beneath spreading oak and pine. Nothing much happens in Kamuela. The townspeople live their lives at their own pace; far removed from the violent pulse of a large city.

Forty-one years ago Kamuela was different.

World War II was well into its second year and Marines were fighting in the vicious island-hopping campaigns that sent them further into the Pacific on their way to Tokyo.

The 2d Marine Division was returning from what would be called the bloodiest battle of the war. The killing ground of Tarawa, a small coral clump in the Pacific, where a ferocious 76-hour blood bath claimed the lives of 1,056 leathernecks before victory was ours. All but 16 of the entire Japanese defense force were killed.

After the battle, the 2d Division wearily returned to the Territory of Hawaii on their way stateside. MajGen. Julian C. Smith, commanding general of the division, decided that Hawaii would be an ideal location for a rehabilitation camp for the war-worn Marines. The 2d Division pitched camp outside Kamuela and christened it "Camp

Tarawa" in honor of their bloody conquest 1,900 miles to the southwest.

Hundreds of olive-drab, pyramid-shaped tents sprung from the peaceful grasslands surrounding Kamuela. Almost instantly, some 12,000 Marines descended upon the unprepared village. The once unknown town was now a bristling hub of activity.

USO shows, liberty trains to Hilo, 65 miles east, movies, 15-cent hamburgers, steak dinner for a buck-fifty and "Miss Kitty's" 70 dance hall girls entertained the division Marines in their off hours.

But Kamuela didn't just become a liberty port inland. It became a huge training arena for the division. Marines trained daily, gradually building their stamina and fighting strength back to what it was before Tarawa.

Six months had passed since the Battle of Tarawa. The 2d Division, now strong and ready, received word that they would be heading back to the battlefield.

By May 1944, the division left Hawaii. It headed across the Pacific and continued the war through fierce battles on Saipan, Tinian, Guam and the Mariana Islands. The 2d Division never returned to Kamuela.

Footprints, tank tracks, brown patches of dead grass where tents once stood, and deserted Quonset huts were all that remained of the feverish activity that emanated from Camp Tarawa for almost six

months. But this wouldn't be the last time Kamuela would see Marines.

Three months passed and Kamuela had settled back into its tranquil routine. Then in August, the 5th Marine Division set up house in the tiny community.

Commanded by MajGen. Keller E. Rockey, the 5th Division had sailed from Camp Pendleton, Calif., to make Camp Tarawa its training base and prepare for one of the most famous battles of the war.

The 5th chose the area on the "Big Island" because it closely resembled some of the terrain they might expect as the war progressed. Again Kamuela bristled with thousands of men preparing for battle. The USO shows were back and Miss Kitty's girls wore out hundreds of shoes dancing with Marines.

For another six months Camp Tarawa Marines trained hard. Then, in January 1945, they too received word that battle was to be waged. Just as the 2d Marine Division had left, so too departed the men of the 5th.

They left the idyllic surroundings of Kamuela and steamed for Iwo Jima. On Feb. 19, 1945, the 5th Marine Division stormed ashore across the island's black volcanic sand.

Today, the spot where a wooden gate once marked the entrance to the almost unknown training camp, a rickety cattle gate now swings and the fields over which thousands of Marines trampled and tanks rumbled are now serene pastures where horses casually spend their day grazing.

Kamuela is still small, quiet and complacent. A tourist may pass through without much notice. But on one corner beneath three oak trees a boulder stands guard. A plaque made of brass shell casings is cemented to the rock and simply says, "Camp Tarawa 1943-1945, the 2d and 5th Marine Divisions trained here to bring peace to the Pacific."



IT WAS HOME — The main gate of Camp Tarawa near Kamuela on the big island of Hawaii, has long since been removed but the memories of the 2d and 5th Marine Divisions still linger on the rolling grasslands where they trained.



WORLD WAR II QUONSET HUT — This was the large training base of Camp Tarawa on the island of Hawaii.



HE REMEMBERS — Pepe Kalima, 72, a local cattle rancher on Hawaii, remembers the Marines of the 2d and 5th Marine Divisions when they came to Hawaii and set up Camp Tarawa as their training base during World War II.



MARINE CAMP — Camp Tarawa, sprawling across the rolling grasslands of the island of Hawaii, was the training ground for the 2d and 5th Marine Divisions during World War II. (Photo courtesy of the Parker Ranch)



PILING UP THE TRASH — SSgt. William Mock, Hq. Co., H&S Bn., was one of the Camp H.M. Smith Marines who helped keep Hawaii clean during this quarter's Weepul Campaign, July 14, when they swept the Salt Lake Boulevard area in search of trash. More than 240 plastic trash bags were collected during the five-hour drive. (Photo by Sgt. Chuck Jenks)

WHOLESALE MEAT WAREHOUSE

FOUR CONVENIENTLY LOCATED WAREHOUSES TO SERVE YOU

Our wholesale meat warehouse is open Monday to Saturday to offer wholesale meat, poultry and seafood products directly to the general public at down to earth savings. Our sincere desire is to provide good values. Your satisfaction and repeat business is our greatest reward. We thank you for trading with us, and please tell your friends about us.

PRICE LIST		AUGUST 1984		WEIGHT	\$ PER LB.	\$ PER CTN.
1	Ground Beef Steak (seasoned to perfection)	10#	1.59	15.90		
2	Ground Beef Patties 40/4 oz. portions plain	10#	1.59	15.90		
3	Ground Beef Patties 40/4 oz. portions pre-seasoned	10#	1.59	15.90		
4	Ground Beef Teriyaki Seasoned Patties	10#	1.59	15.90		
5	Ground Beef 5/2# pkg.	10#	1.49	14.90		
6	Beef Stew-Boneless (very lean)	10#	1.98	19.80		
7	Beef Stew-Semi Boneless	10#	1.68	16.80		
8	Ox-Tail	10#	1.29	12.90		
9	Beef Tripe	10#	.79	7.90		
10	Beef Teriyaki Sliced Thin 5/2# pkg.	10#	2.39	23.90		
GRAIN FED BEEF						
11	Boneless Top Sirloin Steak	8#	3.74 1/2	29.96		
12	T-Bone Steaks from Young Steer Beef	8#	3.79 1/2	29.96		
13	Rib Steaks from Young Steer Beef	8#	3.79	28.72		
14	Beef Shortribs for B.B.Q.	10#	1.78	17.90		
RANGE FED BEEF						
15	Sirloin Tip Steaks	8#	2.49	19.98		
16	T-Bone Steaks	8#	2.55	21.20		
17	Boneless Top Sirloin Steaks	8#	2.98	23.84		
18	Boneless Chuck Steaks	9#	1.99	17.90		
LAMB CUTS						
19	Lamb Ribs for B.B.Q.	8#	.99	7.98		
20	Lamb Ribs Cut Up For Stew	8#	1.19	9.52		
Mix Combo (2 lb. each item)						
21	Picnic Pack (Beef, Teri, Shortrib, Pork, Riblet, Hamburger, Frank)	10#		18.98		
22	Varley Pack (Beef Teri, Chopped Pork, Pork Chops, Hamburger, BL Stew)	10#		19.98		
23	Breaded Veal Steaks	7 1/2#	1.86	13.99		
PORK ITEMS						
24	Pork Steak-Semi Boneless	10#	1.69	16.90		
25	Pork Chops Wholeloin	10#	1.89	18.90		
26	Lean Loim End Pork Chops	10#	1.79	17.90		
27	Chopped Pork 5/2# pkg.	10#	1.79	17.90		
28	Pork Teriyaki Sliced Thin (excellent for Tonkatsu)	10#	1.89	18.90		
29	Bally Pork	10#	1.39	13.90		
30	Pork Ribslets for B.B.Q.	10#	1.49	14.90		
31	Pork Spareribs — Center Cut for B.B.Q.	10#	1.69	16.90		
32	Pork Spareribs — Sweet Sour	10#	1.19	11.90		
33	Young Tender Pork Sparerib for B.B.Q.	9#	1.89	16.98		
34	Smoked Ham Shanks or Rocks	10#	1.39	13.90		
35	Pigs Feet — Extra Meaty Cut Island Style	10#	1.19	11.90		
SAUSAGE AND POULTRY						
36	Turkey Franks	10#	1.09	10.90		
37	Grill Hotdogs from Iowa	10#	1.59	15.90		
38	Sliced Bacon 5/1# pkg.	5#	1.39	6.98		
39	Portugese Sausage — Medium or Hot	5#	2.59	12.95		
40	Smoked Sausage — Medium, Hot or Polish	5#	2.98	14.90		
41	Filipino Longanisa	5#	2.59	12.98		
42	Luncheon Meat	6# can	1.39	8.34		
43	Turkey Drumstick	10#	.78	7.80		
44	Turkey Tail	10#	.69	6.90		
45	Chicken Thighs	5#	.79	3.95		
46	Chicken Wholelegs	5#	.88	4.40		
601	Sliced Roast Turkey Breast	7 1/2#	2.59	19.43		
SEAFOODS						
401	Fresh Frozen "Ono" from Island Waters	8#	2.89	23.18		
47	Butterfish	10#	1.89	18.90		
48	Mahi-mahi	10#	1.89	18.90		
49	Surliniger (breaded seafood patties)	4 1/2#	1.58	7.16		
50	French Fries	5# bag	.88	3.45		

All meat and poultry are U.S.D.A. and Hawaii State inspected conveniently packing in 8# to 10# cartons. Transactions are cash or U.S.D.A. Food Stamps. Prices are subject to change without notice. Special sales are to be announced from time to time through news media.

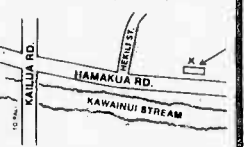
DILLINGHAM
1336
Dillingham Blvd.
8:00 a.m. to 5:00 p.m.
847-5608



WAIPAHU
off Farrington Hwy.
Next To Parts City
10:00 a.m. to 6:00 p.m.
671-9122



KAILUA
150-B
Hamakua Dr.
9:00 a.m. to 6:00 p.m.
261-4272



WAIHAWA
off Kam Hwy.
By Parts City
10:00 a.m. to 6:00 p.m.
622-5044



Teak Bookcase Special!



• 84" \$229.95
• 71" \$199.95

\$169.95 60"
\$119.95 36"

It's the most attractive way to organize favorite novels, paperbacks and classic readings plus keep them within easy reach. The teak bookcases come in assorted sizes to complement your collection as well as your home.

PRICES FROM \$119.95
Sale Prices Good Through August 5, 1984
scandinavian gallery
DISCOVER THE LOOK!

Next To BJ Furniture • 98-107 Kam Hwy Ala Ph: 487-1588
10 AM - 9 PM Mon - Fri, 10 AM - 5 PM Sat, 10 AM - 4 PM Sun.

THE HAWAII ARMY & AIR FORCE EXCHANGES ANNOUNCE THE FIRST EVER

30/20 GOLD SALE

For two short weeks starting **AUGUST 1ST.**
Come in to any of the 4 AAFES main stores and save.

30% OFF 20% OFF

ON ALL 14K GOLD CHAINS
To include Diamond Cut
Serpentine
Cobra
Herringbone
2, 2 1/2, 3 & 4mm Solid Rope
Heart
All Italian Tri Color Jewelry
AND MANY MORE STYLES
In lengths from 7" to 30"
ALSO - HEAVY LINK BRACELETS & NECKLACES

OVER 100 STYLES OF 14K EARRINGS
LADIES & GENTS NUGGET JEWELRY
HUNDREDS OF CHARMS TO INCLUDE
HAWAIIAN CHARMS
OUR ENTIRE SELECTION OF
RELIGIOUS JEWELRY

Layaways will be available on sale merchandise.
ALL PRICES ARE BASED ON WORLD GOLD AS OF JULY 26, 1984

This ad is neither sponsored by nor paid for by the Army & Air Force Exchange Service.

Salutes

EDITOR'S NOTE: Salutes recognizes individuals for their achievements and exceptional performance and to welcome arrivals to Hawaii.

2/3
Welcome aboard:

- Capt. N.J. Hanley
- HMI P. Alvarado
- SSgt. J.E. Johnson
- Sgt. P.A. Brown
- Sgt. P.J. Emmons
- Cpl. G.D. Gifford
- HM3 B.A. Westerfield
- L.Cpl. S.C. Curie
- L.Cpl. K.E. Mayo
- PFC H.L. Arthur

Meritorious Marks:

- Cpl. D.A. Dure
- Cpl. S.R. Kintz

Reenlistments:

- Cpl. R.A. Hunt
- L.Cpl. W. Holt

BSSG

Welcome aboard:

- Capt. R.G. Nealis
- Cpl. C.V. Conn
- L.Cpl. A.E. Easter

Promotions:

- Sgt. C.V. Anderson
- Sgt. K.A. Breen
- HM2 A. Coria Jr.
- HM2 R.F. Dennis
- HM2 Q.D. Fletcher
- HM2 J.C. Fredericks
- Cpl. L.K. Blackmon
- Cpl. S.M. Chase
- L.Cpl. B.K. Sams

Navy Achievement Medal:

- GySgt. K.M. Bingham

Certificate of Commendation:

- Cpl. J.F. Kendall

Meritorious Marks:

- Sgt. R.F. Dugan
- Sgt. A.W. Polz

H&MS-24

- Welcome aboard:
- GySgt. D.L. Clark
 - GySgt. J.H. Vnros
 - Sgt. P.F. Caruana
 - Sgt. W.H. Riker

H&MS-24

- Welcome aboard:
- Cpl. D.D. Cyr
 - Cpl. J.A. Guzewicz
 - L.Cpl. D.E. Bell
 - L.Cpl. J.A. Best
 - L.Cpl. J.A. Herzberg
 - L.Cpl. M.A. Ibanez

PFC R.D. Keisler

- PFC J.R. Munn

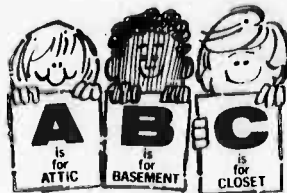
PFC F.C. Pearson

- PFC J.D. Respus

THE FIVE CHURCHES OF CHRIST

Meeting on this island are:

- Church of Christ at Honolulu**
1732 Keeaumoku St. Ph. 536-7952
SS 9:30 a.m. — Worship 11:00 a.m.
& 7 p.m. Wed. 7 p.m.
- Church of Christ at Peari Harbor**
515 Main St. Ph. 422-7033
SS 9:45 a.m. — Worship 8:45 a.m.
& 6 p.m. Wed. 7 p.m.
- Church of Christ at Kailua**
400 Malouin Ave. Ph. 262-5227
SS 9 a.m. — Worship 10:00 a.m.
& 5 p.m. Wed. 7 p.m.
- Church of Christ at Waihala**
181 California Ave. Ph. 621-7265
SS 9:00 a.m. — Worship 10:00 a.m.
& 5 p.m. Wed. 7 p.m.
- Church of Christ at Waipahu**
94-447 Apowale Ph. 677-4222
SS 9:00 a.m. — Worship 10:00 a.m.
& 6 p.m. Wed. 7 p.m.



Call
235-5881

Start the search... in the attic, in the basement, in the closet... and collect those things you no longer need or use.

WINDWARD MALL

August Special Events

S	* M	* T	* W	* T	* F	S
5	6	7	8	9	10	11
COMMENTS OR QUESTIONS ON OUR CALENDAR? CALL 247-8767 Voter Registration 10-5	OPENING SOON! 14 Karat Plum Special Dreams What's Cookin' Windward Beauty Supply	BEAT THE HEAT! Shop in air conditioned comfort at Windward Mall	YOUR VOTE COUNTS! REGISTER TO VOTE WEDNESDAY THROUGH SUNDAY THROUGHOUT AUGUST Liberty House Wing Voter Registration 10-7	JUST MINUTES AWAY FROM WHEREVER YOU ARE! Voter Registration 10-7	"THE NEW CREATIONS" 7 PM Center Stage Voter Registration 10-7	BALLET CELESTE INTERNATIONAL from San Francisco Noon Center Stage Voter Registration 9:30-5:30
WE'RE ON YOUR SIDE! Voter Registration 10-5	COMING TO WINDWARD MALL THIS MONTH: • McDonald's "Search for Talent" finalists • Keiki Music School • Castle Jazz Ensemble • Kokokahi Gym-a-Thon and more!	WINDWARD MALL is your one-stop location for: • SHOPPING • DINING • SERVICES • COMMUNITY EVENTS ... AND FUN! JOIN US! Voter Registration 10-7	For the best in quality and variety, make WINDWARD MALL your Back-to-School headquarters! Voter Registration 10-7	BACK-TO-SCHOOL SALE SPECIAL FOR KIDS! Noon to 3 PM FREE! • Face Painting • Balloon Animals by the Story Creek Critter Clowns Voter Registration 10-7	BACK TO SCHOOL SALE ★ AUDY KIMURA 8:30 PM Center Stage Voter Registration 10-7	BACK TO SCHOOL SALE OPEN TIL 9 PM ★ PETER MOON BANO 8:30 PM Center Stage Voter Registration 9:30-5:30
MALL HOURS: MON.-FRI. 10 AM-9 PM SAT. 9:30 AM-5:30 PM SUN. 10 AM-5 PM						

GOES HAWAIIAN!
Unicare
The Hair & Skin Care Professionals for 12 Years!
NOW Available in most Drug, Grocery & Sundries Departments, including All Military Exchanges! **ASK FOR IT BY NAME!**
Hair & Skin Conditioners, Aloe Vera, Jojoba & Blue Shampoos All By

COUPON HILLTOP RANCH
Spend A Day In The Country!
BOARDING RIDING LESSONS TRAIL RIDES
All Ages Group Rate Bring your family & friends
Waianai Reservations Please 296-8483 or 261-9504
Bring this coupon 4 for the price of 3

FAST EDDIES
DISCOUNT & LOUPIE
57 Center St. Hahaione 761-8641
Line-Up
Thurs. 2 **STRICTLY BUSINESS**
All-Girl R&B Band
5c Draft 8:30-9:30 P.M.
Fri. 3
ALL-MALE REVIEW
8-10 P.M.
Sat. 4
SOLUTION
Great New Music Band
11th Drinks 8-10 P.M.
Sun. 5
ROCK-FEST 8 P.M.
2 Great Bands
11th Glass 12th Pitcher
Mon. 6
METAL MADNESS AARONS ROD
Hope & Schnapps 12th
Tues. 7
LADIES NITE STRICTLY BUSINESS
White Wine 11th
Wed. 8
SOLUTION
Henry's Draught
11th Glass 12th Pitcher
OPEN 7 DAYS A WEEK 261-8561

WINDWARD MALL
AUGUST sale days
INSTANT FINANCING FOR ALL MILITARY E-1 & UP, GOV'T EMPLOYEES & CIVILIANS*

GET A PAIR OF FREE AUTO SPEAKERS
with the purchase of either one of these auto stereos.

CAR 355
In-Dash AM/FM Digital Stereo with Auto Reverse Cassette and Built-in Power Amp
• Stereo Tuner/Cassette Amp
• Auto Reverse
• 12 Station Presets (6 AM, 6 FM)
• Auto Scan Tuning
• Preamp Output & Speaker Output
• 70 US EQ
• IMS
• CMS
• Locking FF and Rewind

CAR 360
In-Dash AM/FM Digital Stereo with Dolby™ Auto Reverse Cassette and Built-in Power Amp
• Stereo Tuner/Cassette Amp
• Auto Reverse
• Dolby NR for Tape
• 12 Station Presets (6 AM, 6 FM)
• Auto Scan Tuning
• Preamp Output and Speaker Output
• Speaker Fader Control
• 70 US EQ
• IMS • Separate Bass and Treble
• CMS • Locking FF and Rewind

MZ630 SPEAKER SYSTEM
• 20 oz. Barium Ferrite Magnet
• Frequency Response: 100Hz to 18kHz
• Dome Type Tweeter
• Ferrofluid Midrange Driver
• High Temperature Resistant Grille
• Molded Woofer Cone
• Max. Power Handling: 100 Watts
• 4 Ohm Impedance

MZ602 SPEAKER SYSTEM
• 20 oz. Barium Ferrite Magnet
• Frequency Response: 60Hz to 18kHz
• Ferrofluid Cone Tweeter
• High Temperature Resistant Grille
• Molded Woofer Cone
• Max. Power Handling: 100 Watts
• 4 Ohm Impedance

50% OFF RACK AND A FREE PAIR OF SPEAKERS
with the purchase of one item from each category

FULLY AUTO QUARTZ LOCK DIRECT DRIVE TURNTABLE
• Quartz Phase Locked Direct Drive Motor
• Low Mass Straight Tone Arm
• Gold Plated Lead Wires, Headshell Terminal Pins and Output Plugs
• Fully Automatic Operation
• Front Mounted Controls
• Viscous Oil Damped Cueing

FULLY AUTO DIRECT DRIVE TURNTABLE WITH LINEAR TRACKING TONEARM
• Linear Tracking Tonearm
• Gold Plated Output Plugs
• Fully Automatic Operation
• Auto Record Size Selector
• Auto Record Speed Selector
• Automatic Repeat
• Pitch Control w/ Stereo Scope

SR 520 RECEIVER
38 Watts per Channel Into 4 ohms, Minimum Continuous Power Output from 20Hz to 20kHz, with no more than 0.09% THD.
• Gold Plated Input/Output Jacks
• Video Ready
• 16 Station Preset Memory
• Bass, Midrange & Treble Controls
• Auto Scan Tuning
• PLL Digital Synthesized Tuner with Pilot Canceller • Tape Monitor
• Provisions for Two Pairs of Speakers

SR 620 RECEIVER
55 Watts per Channel Into 4 ohms, Minimum Continuous Power Output from 20Hz to 20kHz, with no more than 0.06% THD.
• Gold Plated Input/Output Jacks
• 16 Station Preset Memory
• Auto Scan Tuning
• 2 Tape Monitors

SR 430 AM/FM DIGITAL SYNTHESIZED STEREO RECEIVER
• 30 Watts per Channel into 4 Ohms, 20Hz, 20kHz with no more than 0.05% THD
• Gold Plated Input/Output Jacks
• Video Ready
• Digital Synthesized Tuner
• 16 Station Preset Memory (AM, FM)
• 2 Sets of Tape Output Jacks
• Up/Down Touch Control for Tuning

SD 221 SOFT TOUCH DOLBY™ "B" & "C" CASSETTE DECK
• Soft Touch Operation
• Gold Plated Input/Output Plugs
• Peak Reading LED Meters
• Dolby B
• Timer Standby

SD 321 SOFT TOUCH DOLBY™ "B" & "C" CASSETTE DECK
• Soft Touch Operations
• Gold Plated Input/Output Plugs
• Dolby B & C
• Peak Reading LED Meters
• 3 Position Tape Selector
• Timer Standby

SD 530 FEATHER TOUCH AUTO REVERSE DOLBY™ "B" & "C" CASSETTE DECK
• 2 Motor Feather Touch Operation
• Automatic Quick Reverse Record & Play
• Dolby B & C
• Gold Plated Input/Output Jacks
• 31 Tune Quick Music Sensor
• Automatic Song and Side Repeat
• Wireless Remote Control Capability with Optional RC 430/RMC 12

*** 6 MONTHS FREE FINANCING***

177 S. KAMEHAMEHA HWY. (808) 622-3995
28 KANEONE BAY DRIVE (808) 254-5851
848 ALA LILIKOI STREET (808) 834-1496

MILITARY TV & STEREO

CALL OUR CREDIT HOTLINE 834-1496

BRING THIS AD WITH YOU FOR **10% OFF** ENTIRE STORE**

*IF CONTRACT BALANCE IS PAID WITHIN 6 MONTHS WE WILL REFUND ANY FINANCE CHARGES PAID ON THAT ITEM NO RESTRICTIONS. NOT ALL ITEMS AT ALL STORES. LIMITED QUANTITIES. **HIGH SALE ITEMS ONLY.



Bodybuilder wants to spread muscle power around town by helping women compete

by Sgt. L.C. Brooks

The sport of bodybuilding has come a long way in the past few years, especially for women. There are now city- and state-wide competitions for women as well as men. But the competition level doesn't end there. National competition is also a goal to work toward. That goal has been achieved by Renee Chavez, wife of Maj. Rocky Chavez, 1st Battalion, 12th Marines.

"My first reaction was you're kidding and so was my husband's. But we went to see a bodybuilding contest and loved it. My husband said if you want to look like that, go ahead!"

years for them to get out of shape and they have to realize it's going to take awhile to get back in shape."

She goes as heavy on the weight as possible and does the repetitions correctly. "I don't have to worry about getting big. I don't think women can work hard enough to get really big like men," said the petite blonde. Women that are overbuilt are often accused of taking steroids. I've been accused of taking them and I'm not big by any means. Some women may have a higher level of testosterone than other women, causing their muscles to get bigger than usual when working out.

Women with children should not feel their past the state of being a bodybuilder. "The people at the mini-gym were astonished that I have three children. They said 'you look like that and have three children.'" said Chavez laughingly.

Chavez is interested in promoting bodybuilding for women in Hawaii. "Hawaii is the mecca of beautiful bodies and the women are out there. I feel confident and qualified to teach others the sport. I want to promote mental and physical well-being in others." According to Chavez, when people feel good about themselves, they make others around them feel good.

"Teaching bodybuilding motivates me. It's hard to stay motivated when you're doing it by yourself. But when you have someone to do it with, you're more interested and enthusiastic. Bodybuilding has made me feel 200 percent better about myself and when I see others get in shape, I feel even better.

Chavez recently started teaching bodybuilding during the evening.

With the traditional competition only a few months away, Chavez will soon start her vigorous pre-competition program. This program will set the stage for the possible addition of trophies to the 32 that already monopolize her living room.

At Chavez's latest competition, Ms. Hawaii International in May, she won first place in the lightweight division, first place overall, most muscular and most asymmetrical.

This recent achievement added four trophies to the 28 that are eye-catcher's upon entering her living room. In addition, the win qualified her for the National Bodybuilders Competition in New Orleans Oct. 20.

"Qualifications for the national meet are tough," said Chavez. A builder must win first place at a regional meet before qualifying for the national competition. As far as I know I'm the only woman from Hawaii going to the American Nationals."

Chavez used to weigh 86 pounds and while a lot of women feel they are overweight, she felt she was underweight and needed to gain. She really didn't know what bodybuilding was until the manager of a health club in Virginia asked her to compete four years ago.

She is very muscular and likes the athletic look. "I gained that look through hard work and diet," said Chavez. When preparing for competition, my diet consists of high protein, low carbohydrates, and medium fat. My body can tolerate that type of diet for two or three weeks."

Bodybuilding is more than just something to do for Chavez. "I live and breath bodybuilding. The mental rewards are immediate. Women especially learn to have more faith in themselves. Their self-esteem is also given a new lift if they stick with the program."

"A lot of women that want to get into bodybuilding quit after a couple of weeks when the novelty wears off. It took two or three

TORAL DEVELOPMENT — Chavez is developing her upper torso through the use of fine dumbbell presses. (Photo by Cpl. T.J. Clark)



ESTYLE POSING — Chavez displays her striking poses used in her winning performances. She likes to pose to classical music. (Photo by Cpl. T.J. Clark)

ALL IN THE FAMILY — Sage Chavez, 6, likes to assist his mother with military presses. (Photo by Cpl. T.J. Clark)

Falcons soar to golf win in HASAC tourney

Story and photos by Cpl. Pat Lewandowski

Air Force Falcons swooped to Kaneohe Klipper Golf course here, July 27, and led the Hawaii Armed Forces Athletic Council Golf Championship with overall team in the open and senior divisions.

Marine team, led by Capt. Brunner, HqCo., 3d MAW, placed second in the open and third in the senior division.

Air Force enjoyed an early lead as they dominated first play on their home course. Master Sgt. Jay Coffey took it round with a two under par, the lowest score during tournament play.

Second and third rounds played at Barber's Point and Navy/Marine facility at Harbor. Coffey won both and led by four strokes into the fourth and final

18th hole gave him a little trouble, however, as he left the par four hole with a double-bogey. He moved on to the 16th and birdied it, giving him a two-stroke lead over Coffey and 1st Lt. Rick Murray, MAWS-24, who was biting on the heels of Brunner all through the round.

At the final hole, Murray made par, but still couldn't catch Brunner who kept a one stroke lead and won the tournament with a four-day total of 295. Brunner captured the overall title and the open division, with

Murray one stroke behind. The senior division was won by Cmdr. John Witherspoon, Coast Guard, who shot a 298 during the event.

The team title went to the Air Force, who won both divisions with 2,453 strokes and 10 players. The Marines placed second in the open division with a 1,540, and third in the senior division with 998. The Navy placed second in the senior division and third in the open contest, while the Coast Guard placed fourth in both.

The HASAC Golf trophy was given to the Air Force.



BUNKER BUSTER — Air Force Maj. Jim Reed makes his sand shot as he tries to put the ball on the 18th green.

complete turnaround was needed during the last round as he fell behind Brunner, who finished the round with a two under par score.

On the tenth, Brunner birdied and captured the lead. The



NOT ENOUGH — AT2 Mazell, of the Coast Guard, doesn't get enough on the ball as he tries to hole the 18th green on his stroke.



From pure muscle to 10-speeds

Is there a 10-speed, computerized "attack bicycle" in your future? Probably not. But bicycles have had an on-again, off-again place in military history since the Franco-Prussian War around 1870.

It was the French army that envisioned bicycles as ideal vehicles, swift and silent, to send armed scouting expeditions behind Prussian lines. With targets identified, a bicycle-mounted assault force would then be used for a surprise attack, fast and lethal, before disappearing back into the night to its own lines. At least, that was the theory.

Unfortunately, it didn't work out that way. The bicycles of 1870 were heavy, clumsy, rigid and tended to fall apart in rough terrain. "Swift" was not a term linked with bicycles of that era. There being no chain drives, it took a lot of pumping to get one of the lumbering, jolting monsters up to speed.

A few years later, the Italians gave bikes a try. In 1875, the Italian Army had some success carrying out extensive maneuvers under battle-like conditions with the best bikes they could find. This encouraged other countries to take a closer look at the bicycle's potential and they, too, began experimenting, but with little progress.

Tricycles were designed to haul heavy equipment; a four-wheeler bike followed. But it would have taken an acrobat to master them because, lacking spring action, these machines jerked and rocked violently over battle-torn roads.

The revolutionary invention, which made the bicycle a more practical mode of transportation, and therefore more useful in the field, was the pneumatic tire.

It was important enough to get the U.S. Army experimenting

with bikes, but the result was more show than substance.

Big, rotating umbrellas were attached to catch the wind and "sail" bicycles over hilly terrain. But bikes and riders often ended up in a tree or a muddy creek.

It didn't take long for the Army to decide on a more practical approach. They concentrated on making the bicycle a dependable and swift mode of transportation. The new approach paid off in 1896 when the 25th Infantry Bicycle Corps was formed at Fort Missoula, Mont. The all-volunteer unit made several successful cross-country trips, including one covering 1,900 miles.

The invention of the folding bike was another revolutionary development. Credit for this achievement goes to the Austrians and French. The bikes, weighing less than 30 pounds, were carried easily on a soldier's backpack.

By World War I, folding bikes were an integral part of military transportation systems and were often seen on the front line. They were used by the French, Belgians and British as well as the Germans.

The American Expeditionary Force crossed the Atlantic with about 30,000 bikes, which were used to complement other kinds of transportation, as well as for reconnaissance missions and recreation purposes.

When World War II broke out, the soldier-bicyclist was a familiar figure in both the armies of Europe and Asia. But not in the U.S. Army. American troops were transported by ships and planes and then by trucks and trains.

The soldier-bicyclist proved to be an effective force in the destruction of railroads and bridges behind German lines by French underground resistance

fighters. And bikes were sometimes used to move supplies when trucks or jeeps broke down.

In the Far East, bicycles were particularly suitable for moving through thick jungle areas. Japanese expertise in the use of bicycles was an important factor in the takeover of Malaya and Singapore.

During the Vietnam War, the bicycle again proved its worth.

To support the Viet Cong in South Vietnam, the North Vietnamese ran a supply line down the winding Ho Chi Minh Trail, with thousands of cyclists carrying weapons, ammunition, and other supplies. Silent, sturdy, and hard to detect, the bikes could carry hundreds of pounds of supplies.



DoD provides med school for qualified students

BETHESDA, MD - A career in medicine does not have to start with concern about the high costs of a medical education leading to the Doctor of Medicine degree. For qualified college students and graduates interested in serving their country as military officers, there is a quality alternative.

The Department of Defense operates the nation's only military medical school in Bethesda, Maryland, at the F. Edward Hebert School of Medicine of the Uniformed Services University of the Health Sciences. It is a tuition-free fully accredited four-year medical program leading to the M.D. degree.

Students entering the program are commissioned as ensigns or second lieutenants during their medical training, and receive the pay and allowances of their rank during medical school. Upon graduation these military medical officers will owe seven years of military service

excluding any graduate medical training they may elect to receive.

The competition for admission to the Hebert School of Medicine is keen with an average grade point average of 3.47 and an average Medical College Admissions Test (MCAT) score of 10.2. Nearly 4000 applications are expected this year for the 156 available positions in the class of students to begin in July of 1985. Applications are accepted from 15 June to 1 November 1984, and late applications are not accepted.

Admission requirements are rigorously applied. Applicants must be United States citizens, have a college bachelor's degree from an accredited university or college in the United States or Canada, a strong background in sciences and math, and must take the New (MCAT) test within three years prior to matriculation.

Individuals apply through the American Medical College Application Service (AMCAS)

and not directly to the Hebert School of Medicine. Pre-medical advisers at local colleges and universities of potential applicants should have the requisite AMCAS application material and information on how to apply to medical school. Applicants already serving in the

armed forces must secure permission to attend through their chain of command.

The Hebert School of Medicine at the Uniformed Services University is a full accredited medical school and currently has an enrollment of approximately 625 medical students in the four

years. Qualified individuals wishing more information about the nation's military medical school should request additional information from your Member of Congress or the Director of Admissions, ATTN. PETE, Uniformed Services University of the Health Sciences, 4301 Jones

Bridge Road, Bethesda, Maryland 20814.

HALE KOA HOTEL

ACCIDENT CASES

INCLUDING
WRONGFUL
DEATH CLAIMS
AND
CATASTROPHIC INJURIES

You may qualify if you or any member of your family has been injured.

524-5400

Law Offices of
GARY GALIHER & ASSOCIATES

No Charge For Initial Consultation
No Recovery - No Fee

333 Queen Street, Suite 800 Validated Parking



**GENERAL ELECTRIC
COMPANY**
Factory
Service



WE OFFER THESE SERVICES

- Scheduled Service Mon.-Sat.
- Emergency Service
- Service Contracts
- Step-by-Step Repair Manuals/Parts
- Factory Trained Technicians
- Refrigerator/Freezer
- Washer/Dryer
- Range/Microwave
- Dishwasher/Disposal
- Compactor
- T.V.
- Room Air Conditioner

Service 533-7462
Emergency 533-7462
Parts 538-1141

ALAN



404 Cooke St.
Honolulu, Hawaii 96813

Eelskin Warehouse • 1236-A3 WAIMANU ST. 533-6822

- ★ATTENTION MILITARY PERSONNEL
- ★Bring this ad with you or mention it
- ★FREE Membership in the Jobber Club with an active military or dependent card. A \$300.00 VALUE
- ★BUY at the same prices that the exchange BUYS it for
- ★BEST MILITARY DISCOUNT IN THE WORLD
- ★BUY Directly from the source.

EXAMPLES		3. MEN'S WALLET	
1. MAKE-UP KIT	Retail 4495	Retail 3195	
	Our Everyday Low Price 2475	Our Everyday Low Price 1750	
	YOUR PRICE 18.00	YOUR PRICE 12.50	
2. COIN PURSE	Retail 1295	4. LADIES WALLET	Retail 5295
	Our Everyday Low Price 700		Our Everyday Low Price 2900
	YOUR PRICE 5.00		YOUR PRICE 21.00

HAWAII'S BIGGEST USED FURNITURE SALE EVER

Happening now! Two major Hotel Renovations offer you Quality Used Furniture at Bargain Prices!!!

	desk-dresser	69.00
	mirror	12.00
	night stand	29.00
	headboard	12.00
	rattan occ. chair	45.00
	rattan side chair	29.00
	floor lamps	18.00
	table lamps	15.00-39.00
	lanai chairs	19.00-29.00
	lanai occ. tables	10.00
	twin bed	39.00
	double bed	49.00
	queen bed	69.00
	king bed	79.00
	bedspreads	14-19.00
	drapery panel	12.00
	carpet approx. 11x17	22.00

INTERISLAND FURNITURE, CO.

717 MOOWAA Street
Back of Kapalama Shopping Center
CALL 847-1381 FOR DETAILS Monday thru Saturday 9 a.m. - 5 p.m.

HALE KOA HOTEL PROUDLY PRESENTS

AL HARRINGTON



The Polynesian singer & storyteller... the brilliant legendary performer... A star of Hawaii 5-0... appearing in a return engagement at the Hale Koa's spectacular Saturday Dinner Show. Al Harrington presents the sights, sounds, and stories of the South Pacific in a way that you'll remember forever!

• Every Saturday evening In August, September, October & November (except August 11 and

September 29) in the beautiful Banyan Tree Showroom.
• Fabulous dinner buffet featuring Roast Baron of Beef served from 6-7:30 p.m.
• Al Harrington's unforgettable show begins at 8 p.m.
• Just \$19.95 for adults, \$14.95 for children under 12; price includes buffet, show, and gratuity.
• Tickets on sale two weeks in advance at the hotel Activities Desk and all Military Ticket Outlets.

HALE KOA HOTEL

2155 Kalia Road • Honolulu, Hawaii 96815-1936 • (808) 956-0995

Summer Home Furnishing SALE

SAVE on our ENTIRE CARPET & DRAPERY SELECTION!

If you've been waiting for the perfect opportunity to get new flooring or window treatments for your home, THIS SALE IS FOR YOU! At Pearl Harbor and Barbers Point Navy Exchanges you'll SAVE on carpets, custom drapery, sheet vinyl, horizontal blinds and vertical blinds. It's our Summer Home Furnishing Sale and it's your chance to save on everything you'll need to beautify your home.

CUSTOM DRAPERY
SAVE 33%
ON ALL MATERIALS

SHEET VINYL
SAVE 25%

HORIZONTAL BLINDS
SAVE 44%

VERTICAL BLINDS
SAVE 33%

SAVE UP TO \$20²⁰ per sq.yd.
WALL TO WALL CARPETS

SOLID SAXONY PLUSH Choose from beautiful colors. Sug. Retail \$14.95	SAVE \$7.45	\$7.50 sq.yd.
ANTRON SAXONY PILE Your choice of 12 gorgeous colors. Sug. Retail \$15.95	SAVE \$6.20	\$9.75 sq.yd.
POPULAR PLUSH PILE Available in 12 of the latest colors. Sug. Retail \$20.95	SAVE \$10.20	\$10.75 sq.yd.
TONE ON TONE SCULPTURE Choose from 8 natural shades. Sug. Retail \$20.95	SAVE \$9.20	\$11.75 sq.yd.
THICK SAXONY PLUSH In 10 of our most popular colors. Sug. Retail \$29.95	SAVE \$14.45	\$15.50 sq.yd.
SMOOTH VELVET PLUSH Your choice of 16 elegant colors. Sug. Retail \$36.95	SAVE \$17.20	\$19.75 sq.yd.
LUXURIOUS SUPER PLUSH Choose from an array of 20 colors. Sug. Retail \$44.95	SAVE \$18.20	\$26.75 sq.yd.
SUPER FINE VELVET PLUSH In 9 deep, rich color selections. Sug. Retail \$49.95	SAVE \$20.20	\$29.75 sq.yd.

Carpet only. Pad and professional installation is available.

Pearl Harbor Navy Exchange
Interiors Plus
Phone: 422-2767
422-2768
Regular Store Hours:
Mon-Sat 9:30 am to 7:00 pm
Sunday 9:30 am to 5:30 pm



Visa and Mastercard accepted
Sorry no layaways

Sale starts August 2, 1984
Sale ends August 26, 1984

NAVY Exchange PEARL

Barbers Point Navy Exchange
Rainbow Annex Furniture Store
Bldg. 1141
Phone: 882-5525
Regular Store Hours:
Mon-Fri 10:00 am to 5:00 pm
Saturday 10:00 am to 4:00 pm
Sunday closed

NAVY Exchange BARBERS PT.

This ad was not paid for by the Navy Exchange.

Servicemembers beware when buying home

by Sgt. Phillip H. Williams
 MCAS, El Toro, Calif. — Halfway through the workday, Sgt. J. Doright received a registered letter in the mail. Odd, she thought to herself, as she hesitantly retrieved the letter from the postal clerk and opened the envelope.

"I can't believe it!" Doright shrieked. Inside the envelope was a statement of foreclosure and a bill for more than \$9,000 due on a house she had sold nearly a year ago. "It's obviously been sent to the wrong place," she thought.

"I called the mortgage company to see if the person my husband and I had sold the house to was still making payments," Doright explained. "As it turned out, he hadn't and we were in trouble."

According to Doright, the trouble she was referring to was that in addition to finding out that this person wasn't making mortgage payments, she and her husband were still responsible for the loan that had now gone bad. She immediately phoned the Veteran's Administration, where she had secured the loan for the mortgage, to tell them of her plight. Surely they'd understand, they're one of us, she thought.

"Nothing could have been farther from the truth," Doright frowned. "The only response I got

from the VA was that I was still responsible for the loan, of which mortgage payments were overdue, and that they were going to foreclose on the house in about 90 days. From that point, I called the legal assistance office on the Air Station for help."

"I have another client who made an extremely large down payment on a house and now stands a chance of losing it all," stated Capt. Kevin McDermott, a legal assistance officer and Doright's legal advisor. "The person he bought the house from had a lien on the house for more than the value of the house. Now, because my client didn't take the

time to get title insurance, he may have lost his entire investment."

There are basically two types of deeds a potential house buyer can obtain when finalizing the purchase, according to McDermott. "The first is known as a warranty deed. This simply states that the previous owner is going to guarantee that the title to the house is good. The other is called quick claim deed and it basically says that the new buyer agrees to incur all the responsibilities of the house on an 'as is' basis — pretty much the same way one would buy a used car.

"However, there is much more that a potential homeowner

should be aware of," continued McDermott. "In regards to VA loans, the military person should be conscious of the 'subject to' clause. In essence, this relieves the new buyer from any financial responsibilities should the loan go bad. The agreement should read that the new buyer agrees to 'assume' the loan or take out a new mortgage altogether.

"Also, in regards to VA loans," McDermott continued, "the only persons eligible to assume the loan are those who are entitled to

Veteran Administration benefits. Once that is established and the party has fully assumed the loan, make sure that the VA reissues your loan eligibility back." (Veterans are eligible for one mortgage loan at a time and cannot apply for a second loan of that type until the first loan has been paid off or assumed by another eligible party.)

"Never sign a final sales agreement without coming to see us first," he stated. "In most cases where time is a crucial factor, we'll give assistance on a walk-in basis. Otherwise, make a regular appointment to have us look over and discuss the proposed arrangement."

OBSTETRICS AND GYNECOLOGY

Robert C. Allin, M.D.,

Northwestern/Stanford Trained

Certified by the American College of Obstetrics & Gynecology

247-8737



Kaneohe Office

Honolulu Federal Savings & Loan

Kailua Office

Kailua Medical Arts

HUNTER FAN BLOW-OUT!

Due to overstocking in our warehouse, we are offering 52" Hunter originals with reverse blades at contractor prices to the public!

\$158.50

Cash & Carry or Approved Purchase Orders Only
PACIFIC SURPLUS & DISTRIBUTOR LTD.
 455-9010
 262-8131



10% Discount with Military I.D. & This Ad

ITALIAN RESTAURANT
PIZZA • FREE DELIVERY
 LUNCH • DINNER • SANDWICHES

CATERING FOR ALL OCCASIONS
 OPEN 10 A.M. to 9:30 P.M. SUN. THRU THURS.
 10 A.M. TO 11:00 P.M., FRI. AND SAT.
 SALAD BAR • DINNER MENU Available all day.

345 HAHANI STREET
 (At Holiday Mart)
 Expires 8/31/84

261-9070

MILITARY PERSONNEL... \$25

Visit neighbor islands at special hotel rates...

Here's a great way to visit other islands at budget hotel rates. Use Hawaii's top hotel value... from \$25 for 2 comfortable rooms in attractive and convenient locations.

MILITARY OR KAMAAINA RATES
All rates are for double occupancy

Standard rooms from \$25-35
 Superior rooms from \$30-40
 Deluxe rooms from \$35-44



KONA LAGOON
 Kona at Keauhou From \$25



HILO HAWAIIAN
 Hilo From \$29



MAUI BEACH
 Kahului, Maui From \$35



MAUI PALMS
 Kahului, Maui From \$26



KAUAI RESORT
 Waialua, Kauai From \$33



QUEEN KAPIOLANI
 Waikiki From \$29

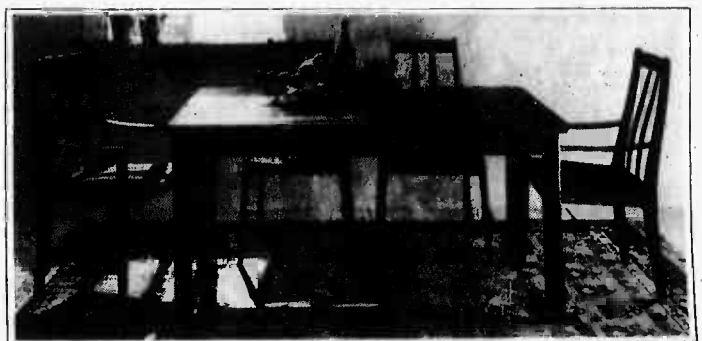
For reservations and information, see your travel agent or call

Hawaiian Pacific Resorts

531-5235 From neighbor islands, toll-free 1-800-272-5275

Executive offices: 1150 S. King St., Honolulu, HI 96814
 Also available: Low cost room + car packages (Dollar Rent-A-Car)
 Room 'N' Vroom packages from Aloha Air Lines (Ph: 836-1111)
 feature these hotels + car + airfare

Experience This New Dining Sensation



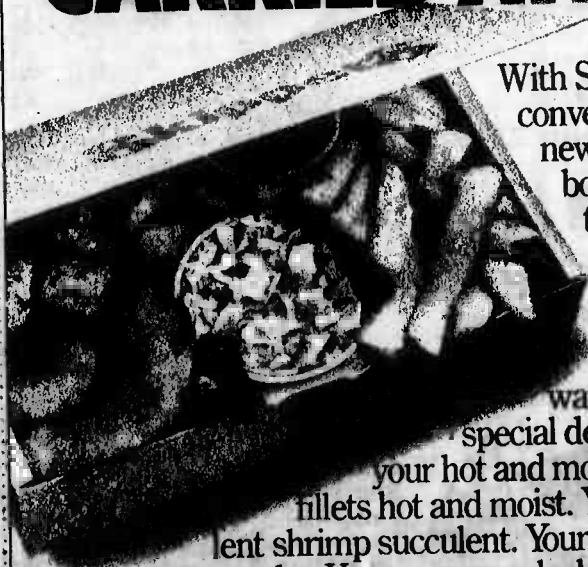
Experience the luxury and superb design of this new dining sensation. The spacious teak table was meant to entertain guests — self-storing leaves extend the table from 57" to 97" plus there's no storage problem! Streamlined chairs are crafted of solid teak and beech hardwood. Their wool blend cushion seat and teak slat back conform to your body for total seating comfort. All now at the new Scandinavian Gallery.

Sale Good Through Aug. 5, 1984

scandinavian gallery
 DISCOVER THE LOOK!

Next to BJ Furniture 98-107 Kaimo Hwy Aloha Ph: 487-1588 10 AM - 9 PM Mon - Fri, 10 AM - 5 PM Sat, 10 AM - 6 PM Sun

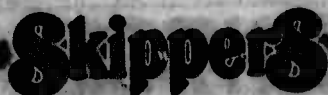
WE'RE GETTING CARRIED AWAY.



With Skipper's convenient, new take-out box, you can take your favorite Skipper's meal anywhere you want. Its special design keeps your hot and moist fish fillets hot and moist. Your succulent shrimp succulent. Your tender chicken tender. Your creamy coleslaw creamy. And so on. Stop in today, and walk out with the hottest new idea in seafood.

FREE 20 OZ. CUP OF ICY COLD Coca-Cola WITH ANY TAKE-OUT MEAL PURCHASE.
 (Offer good thru August 31, 1984)

In Waimalu at the Times Square Shopping Center and in Kaneohe at the Windward City Shopping Center.



37% LARGER COLOR PRINTS ...NO EXTRA COST!

Exchange Special on **magnaprint 35** service

Take your exposed 35 mm Kodacolor film with the coupon below to your Exchange and get big, 4" x 6" color prints for the same price as standard 3 1/2" x 5" prints. Plus, you'll get a handy print wallet free with every order! Hurry, this offer applies only to orders submitted within the sale dates!



SALE DATES AUGUST 4-24

Kodak... Serving the Military Worldwide



This advertisement was neither paid for, nor sponsored in whole or in part, by the Exchange Service.
 ©Eastman Kodak Company, 1984

EXCHANGE SPECIAL USE THIS COUPON!

To get your extra-large color prints at no extra cost, you must enclose this coupon with your order. Simply place this coupon in the order envelope at your Exchange Photo Processing Center. Hurry, this offer is good only for orders submitted within the sale dates!

magnaprint 35 service

Localmotion

OFFICERS' CLUB

TODAY — Lunch is served in the Pacific Room. Beefenters' buffet served from 5:30 to 8:30 p.m. The Koa Room is open from 4 to 10:30 p.m.

FRIDAY — Lunch is served in the Pacific Room. Happy hour in the Koa Room is from 4:30 to 6:30 p.m. with a live band. Also, a country and western band plays from 7 to 11:30 p.m. Mongolian barbecue is served on the lower lanai from 5:30 to 8:30 p.m.

SATURDAY — New England clam bake features individual trays of snow crab legs, shrimp, clams, round of beef and spaghetti. The Koa Room is open from 4 to 10 p.m.

SUNDAY — Champagne brunch menu features top round of beef, chicken a la king, eggs Benedict to order, seafood Newburg, complimentary juice and a glass of champagne. Candlelight dining available in the evening. The Koa Room is open from 5 to 10 p.m.

MONDAY — Lunch is served in the Pacific Room. Monday evening the club is closed.

TUESDAY — Lunch is served in

the Pacific Room. The Koa Room is open from 4 to 9:30 p.m.

WEDNESDAY — Lunch is served in the Pacific Room from 11 a.m. to 1 p.m. and features two specials of the day, deli line, salad bar, chef and shrimp salads, soup plus an array of desserts. Mongolian barbecue is served on the lower lanai from 5:30 to 8:30 p.m.

SNCO CLUB

TODAY — Lunch special today is lasagne. Open menu dining is available from 5 to 8 p.m.

FRIDAY — Lunch special today is mahimahi or chicken. Open menu is available from 8 to 9 p.m. Listen to the sounds of Night Life from 9 p.m. to 1 a.m.

SATURDAY — Dining room is open from 6 to 9 p.m. with open menu dining. Cactus Jack plays from 9 p.m. to 1 a.m. every Saturday in August.

SUNDAY — Bring the family to a champagne brunch from 9:30 a.m. to noon. The dining room is closed Sunday evenings.

MONDAY — Lunch special is mincho burrito, served from 11 a.m. to 1 p.m. The club is closed Monday evenings.

TUESDAY — Lunch special is liver and onions. Tuesday is Mongolian barbecue night from 5 to 8 p.m. Top 40 DJ plays the hits from 8 to 11 p.m.

WEDNESDAY — Lunch is served from 11 a.m. to 1 p.m. featuring beef kabobs and fried rice. Beef and crab, all you can eat, is served from 5 to 9 p.m.

ENLISTED CLUB

TODAY — Lunch is served from 11 a.m. to 1 p.m. Dining room is open from 5 to 9 p.m. with an open menu. Dinner special is top sirloin and Alaskan king crab. Live bands play in the Moongate Lounge and main ballroom from 7:30 to 11:30 p.m.

FRIDAY — Lunch is served from 11 a.m. to 1 p.m. Dining room is open from 5 to 9 p.m. Dinner special is prime rib and lobster tail. Happy hour is from 5 to 6 p.m. Peter's top 40 request line plays from 6:30 p.m. to 1:30 a.m. in the Moongate Lounge. A

live band plays in the main ballroom. The club is open until 2 a.m. and the beer garden is open from 8 to 9 p.m.

SATURDAY — Breezy Inn is open from 5 to 9 p.m. Dinner special is prime rib and lobster tail. Ladies night every Saturday night with free roses for the ladies. The beer garden is open from 5 to 10 p.m.

SUNDAY — Club opens at 11 a.m. Dinner served from 5 to 9 p.m. Dinner special is prime rib and lobster tail. Tonight is soul night with Wolf's in the Moongate Lounge and Peter in the main ballroom from 7:30 p.m. to 1:30 a.m. The beer garden is open from 5 to 10 p.m.

MONDAY — Lunch is served from 11 a.m. to 1 p.m. Dining room is open from 5 to 9 p.m. Italian special features all the spaghetti or lasagne you can eat, including salad bar and garlic bread. Wildfire plays in the main ballroom from 7:30 to 11:30 p.m.

TUESDAY — Lunch is served from 11 a.m. to 1 p.m. Dining room is open from 5 to 9 p.m. with all you can eat smorgasbord. Live band plays in

the Moongate Lounge from 7:30 to 11:30 p.m.

WEDNESDAY — Lunch is served from 11 a.m. to 1 p.m. Dining room is open from 5 to 9 p.m. The chef's special this month is top sirloin with all the shrimp you can eat. The beer garden features sandwiches, pizza, homemade chili, bagels, salads and other items. Tonight live bands play in the Moongate Lounge and main ballroom from 7:30 to 11:30 p.m.



Intramural

Standings

The bowling standings as of July 18 were:

Division A		
Team	Won	Lost
H&MS-24 QA/Maint	17	7
BSSG H&S Co. #1	15	9
C.I.D. Instigators	14	10
1st RabBn	13	11
HMM-262	13	11
SOMS	13	11
VMFA-235	12	12
BSSG	12	12
3rd MedBn	12	12
HqCo. Bde.	9	15
H&HS Navy Supply	7	17
Track Team #2	7	17

Division B		
Team	Won	Lost
H&MS-24	18	6
H&HS	17	7
Track Team #1	17	7
MACS-2	14	10
BSSG Maint. Co.	12	12
BSSG H&S Co.	11	13
HqCo. Bde.	11	13
3rd MedBn	11	13
M&MS-24 GSE	10	14
H&MS-24 Bandits	10	14
VMFA-232 Red Devils	8	16
BSSG H&S Co. #3	6	19

If your eyes need to be open soothe them with

Lavoptik
EYE WASH

AT PAY'N SAVE

This Certificate Entitles Holder To:

FREE CARPET SHAMPOO

for one complete room or area rug with a preview of the new Kirby Heritage no obligation to buy. Home owners or renters must be Present at time of service

Kirby Center of Oahu
146 Hekili St., Kailua
Call for date & time
262-2011 Offer Expires November 30, 1984

KDEO COUNTRY RADIO

July 29, 1984

LAST WEEK	THIS WEEK	TITLE	ARTIST
1	1	Just Another Woman In Love	Anne Murray
2	2	Bummin' Up With Love	Eddie Rabbit
3	3	God Bless the U.S.A.	Lee Greenwood
4	4	Mama He's Crazy	Judds
8	5	Forget About Me	Bellamy Brothers
6	6	Long Hard Road	Nitty Gritty Dirt Band
10	7	Tennessee Homebeck Blues	Dolly Parton
14	8	Let's Fall To Pieces Together	George Strait
12	9	Only A Lonely Heart Knows	Barbara Mandrell
15	10	I Hurt For You	Debra Allen

Hear the Top Country Songs in the Nation on the WEEKLY COUNTRY MUSIC COUNTDOWN SUNDAY MORNINGS at 9 A.M. on AM94 at KDEO Country Radio.

FAMILY CHIROPRACTIC CENTER INC.

KANEOHE 235-6677

WORKERS COMPENSATION • AUTO ACCIDENTS • UNION & MEDICAL INSURANCE
• MEDICARE • APPLIED KINESIOLOGY • NUTRITIONAL ANALYSIS • PHYSIOTHERAPY

CHIROPRACTIC... A NATURAL APPROACH TO HEALTH

• HEADACHES • SHOULDER-ARM PAIN • BURSITIS • WHIPLASH • NUMBNESS IN HANDS & FEET • BACKACHE • PINCHED NERVES • MUSCLE SPASMS • NERVOUSNESS & TENSION

OPEN 6 DAYS A WEEK MON.-FRI. 8:00 AM-6:30 PM SAT. 8:00 AM-1:30 PM
LOCATED IN HONOLULU FEDERAL SAVINGS & LOAN BLDG. 2nd FLOOR
45-1144 KAM HWY., SUITE 200-200A

Funseeker's Sale

SAVE ON SUMMER FAMILY SPORTS FUN!

Use your Visa, MasterCard, American Express

<p>Weider Golden Aristocrat Barbell/Dumbbell Set. 110 lb. #CS-10 Reg. 99.99 79.97</p>	<p>SAVE \$100.00 TUNTURI ERGOMETER The Conditioner for casual exercise or carefully planned aerobic workouts. Reg. 459.99 359.97</p>	<p>TUNTURI ROWING MACHINE Reg. 299.99 239.97</p>
<p>PRO-MATE SKIP ROPES Leather Rope Reg. 11.99 9.97 Nylon Rope Reg. 9.99 7.97</p>	<p>TUNTURI Welded steel tube frame Chromium-plated handlebar, seat post and instrument panel 40 lb. flywheel</p>	<p>AMF HEAVY HANDS Reg. 21.99 17.97 2 lb. Weights Reg. 7.99 5.97 3 lb. Weights Reg. 11.99 9.97 4 lb. Weights Reg. 15.99 12.97 5 lb. Weights Reg. 19.99 15.97</p>

MICROWAVE CONTAINER SALE

SALE STARTS TODAY! A CONTAINER OF NEW MICROWAVE OVENS HAVE ARRIVED FOR IMMEDIATE LIQUIDATION. ALL ARE REDUCED AT PRACTICALLY WHOLESALE COST. SALE ENDS 8/5/84 5 p.m.

VALUES TO \$498

\$236

Limit 2 per customer

INDIVIDUAL FEATURES INCLUDE: ROTOWAVES, CAROUSELS, DIGITALS, PROBES

NEW! SELECT FROM EITHER: PANASONIC, TAPPAN, AMANA, LITTON

166 (Reg. Retail \$348) FREE! cookbook with oven purchase

497 (Reg. Retail \$497) DIGITAL W/BROWNER & PROBE

OUR GUARANTEE: Simple, we guarantee you the lowest price in Hawaii on any oven. This applies to the Microwave/Convection Oven.

PACIFIC SURPLUS & DISTRIBUTORS LTD
MON THURS FRI 9:30-6:00 p.m.
SATURDAY 9:30-5:00 p.m.
SUNDAY 11:00-5:00 p.m.
TUES & WED CLOSED

262-8133
1217 I KAHUA RD
KAILUA

<p>Kaui Swim Mask Reg. 23.99 18.99</p> <p>Hawaii Mask Reg. 21.99 16.99</p> <p>Big C-Little C Snorkel Reg. 10.99 8.99</p>	<p>Scott Hawaii Crystal Flex Body Board with leash Reg. 39.99 29.97</p>	<p>MUNSINGER Knit Short Sleeve Shirts Tailored or boxer knit collar. Four button placket Stripes and Solids Reg. 23.00 15.99</p>
<p>French Style Air Mattress #2711L Reg. 34.99 24.99 #2711C Reg. 24.99 16.99 #2711B Reg. 16.99 10.99</p>	<p>Sea Star Fins Reg. 21.99 16.99</p>	<p>STURGES Men's Shorts In corduroy, sheeling or twill Reg. 18.00/20.00 13.97</p>
<p>WINCHESTER Winchester Rifle 30/30 Cal. Angle Eject #04412E Reg. 199.99 179.97</p> <p>BUCK Folding Hunter Knife Reg. 35.00 27.97 Buckle Knife Reg. 28.00 15.97</p>	<p>Wilson PRO STAFF GOLF BALLS Reg. 17.99 14.97</p>	<p>northwestern TOUR II GOLF SET Features metal woods with the feel of wood & the power of iron, 3 WOODS, 8 IRONS Reg. 299.99 219.99</p>

Winward Mail 247-8733

HANSON

Division of Oshman's Sporting Goods

Kailua Shopping Center 261-9751
Prices good thru Aug. 14

Strategy and luck play big role

The dart game 301 is used in most tournaments. It's a game where the player must use strategy and luck to win the match, according to Jack McClintock, author of "The Book of Darts."

According to the book, in 301 the players, or "darters" as they are known, try to score as many points as possible to be subtracted from an initial total of 301.

The board used is 18 inches in diameter, and is hung 5 feet 8 inches from the floor to the center of the bull's-eye.

The line from which the players make their toss is referred to as the hocky. The hocky is a line

three feet in length, placed eight feet from the target.

A darter's foot must remain completely behind the hocky at all times, although the player may reach as far as he chooses. If the player steps across the hocky, he loses the points of that dart. When the player does step across the hocky, it is known as "getting one's feet wet."

In 301, the double ring — the narrow, outer ring — counts two times the number of the wedge it is a part of.

The triple ring — the thin ring halfway into the board — counts three times the number of the wedge.

The green ring of the bull's-eye

(bull) counts 25 points, and the red center of the bull counts double 25.

Darts used in competition can be as small as the darter chooses, but can be no longer than seven inches and can be no heavier than 55 grams.

A "throw" consists of three darts being tossed. The wire divider on the dart board, called the spider, determines any close calls.

The object of the game is to reduce the score started with, in this case 301, to exactly zero.

The darter must start his point tallying by hitting a double. No points are registered until that initial double has been struck.

Any double will do, including red double bull. The darter must also finish on a double — a double that reduces the score to exactly zero.

This means if the darter is close to doubling-out, but has an odd number remaining as the score, he must even up the score before attempting the final double.

An example of a game pattern is as follows: The player throws for the double ring or double bull until the player doubles-in.

The double-in dart, plus any dart hitting the board after it, begins to score points. The darter then throws for the highest possible score, trying to gain as many points as needed to get to zero.

When the score has been reduced to an even number small enough for the score to be reduced by one double, the player shoots for that spot that will double him out.

The first player to accomplish this, wins the contest.

If in trying to score the final double, a darter shoots more than the number required, he is said to have "busted."

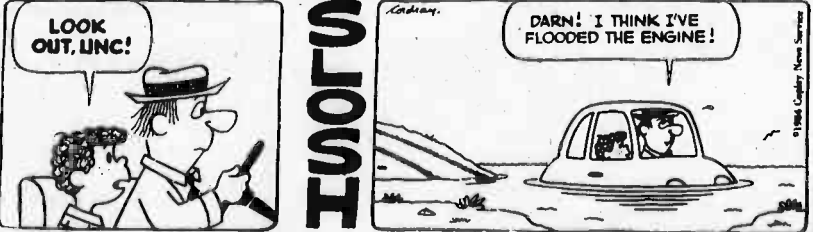
The darter is not out of the game, but rather, must stop throwing until his next turn and his score is not recorded.

The highest score which a player can go out with three darts is 170 — two triple 20s and a double bull.

ARNOLD by Kevin McCormick



ALEX IN WONDERLAND® by Bob Cordray



CROCK® by Bill Rechin & Don Wilder



SALLY FORTH® by Greg Howard



Sportsnotes

The quarterly Kaneohe Klipper Association Golf Tournament for men is Aug. 4 and 5. Entry deadline is 5 p.m. Aug. 2. For more information call MGySgt. Holliday at 257-3120.

Youth Football Registration is scheduled thru Aug. 17 at the Dependent Recreation Center from 9 a.m. to 4 p.m. Registration fee is \$25.

Applications are available at the Station Gymnasium for the Windward Triathlon Aug. 12 and the Honolulu Marathon in addition to other races.

The fall Intramural Flag Football Organizational meeting will be Aug. 8 at noon in the Station Gymnasium. The pre-season begins Aug. 21 and regular season begins Sept. 4.



GETTING INTO IT — 1stSgt. Roberto Martinez, 1/12, won 2 out of 4 matches in the senior division of the racquetball tournament here last weekend. (Photo by Cpl. T.J. Clark)

Marmaduke

By BRAD ANDERSON



"Among other things...riding a skateboard down Fourth Avenue."

NOW

OPEN

First Hawaiian Bank

pays the same rate of interest as Savings & Loans!

Now that we offer the highest rate on passbook-type savings, you have everything to gain by consolidating your accounts at First Hawaiian.

In addition to high interest, you'll get full-service banking including easy access to your money through our statewide network of OTTO automatic teller machines.

Don't you deserve that kind of convenience?

Call us today for more information.

10-17 © 1983 United Feature Syndicate, Inc.

Garage/Lanai Sales

LEFTOVER from last week. 1/2 price/off. Sat. 8 to 11 only. 366 Kalaunui Rd., Hawaii Kai.

MOVING Sale: 1 day only, Sat. Aug. 4, 9 to 3. 374 Oomano Pl., Hawaii Kai.

MULTI Family Garage Sale: surfboards, furniture & lots of misc. everything must go. 41-1750 Makia St., Waimanalo, Sat. & Sun., Aug. 4 & 5, 8-5 p.m.

GARAGE Sale: Sml. tools, bunkbeds, clothes & misc. Aug. 4 & 5, Sat.-Sun. 387 Ka Awakea Rd.

3 FAMILY Garage Sale: 9 to 4. Sat. & Sun., 1419 Auwauku St., Kailua, 282-7371. Turn., clothes (some new), baby items, toys galore! Bikes, new custom-made doll clothes & misc. Cheap! Hear & try the new SINGING MACHINE!

RATTAN furn., piano, stereo, bikes, clothes, etc. 47-323 Maawaena St., Kaneohe, Aug. 4 & 5, 9-2.

3 FAMILY Sale: Sat., Aug. 4, 9 to 4. 729 Kaleaia St., Hawaii Kai, toys, clothes, misc.

GARAGE Sale: Misc. furn. '82 2-bd hood & bucket seats & misc. items. Sat. 8 to 2. 673 Mikiaki St., Kailua.

GARAGE Sale: Sofabed, chairs: lapa: moon calendar: housewares: tools: picture frames, etc. Sat. 9 to 2. 1286 Ohihi St., Enchanted Lakes 235-1372.

GARAGE Sale Sat., Aug. 4, 9 to 4. 34-361 Noholua Pl., Mililani Town.

DISHWASHER, needs some work. \$30. complete. \$35. Single bed w/ sheets. \$20. Carpet, 12x12, \$15. Love seats, like new. \$75. TV Amp., excl. cond., \$125. Ph. 235-3231.

3 FAMILY Garage Sale: baby crib: coffee pot: clothes: misc. Fri. & Sat. Aug. 3 & 4, 9 to 2. Connor Loop, KMCAS.

5 FAMILY garage sale Sat., Aug. 4, 9 to 2 p.m. 454 Auwaina Place, Kailua.

ARD Sale: 3 Families, Aug. 4, 9 to 3 p.m. 716 Waioloa Pl., Kailua.

OPA set, beds, chest, drawer, sewing machine, baby stroller, misc. Aug. 4 & 5, 9-1. 1729 Kaakoa St., Kailua.

73 APTS. FULLY FURN.

AAA Rent Mart, largest selection on Oahu. 943-0092 7 days, 1488 S. King St., Illi 8 Fee.

WAIKALANI Woodlands nr. Schofield & Wheeler, 3 bdrm., 2 1/2 bath, carpets/drapes, pool, 456-4516 or 822-0333.

Waikeala Town - Super one bedroom duplex, small yard, walking close to shops. \$495. Includes utilities. 259-8550.

DISCOUNT MOVING low rates, honest estimates, no damage, fast & professional. 241-734-4489.

73 APTS. PART. FURN.

KAILUA studio \$510 or 1 bdrm. \$550, no pets. Lease till 262-642.

KANEHOE: 3 bdrm., all appliances, 2 car parking \$750 mo. Call 261-6441, 254-8378.

KAILUA: For Rent Studio 3 locks from beach, cable & water incl. \$375 a mo. 261-678.

Find out what's really happening in the Real Estate Business today

CAREER NIGHT SEMINARS 6:30 p.m.

Monday, Aug. 6 - HONOLULU OFFICE 615 Piikoi St., Suite 1206

Tuesday, Aug. 7 - MILILANI OFFICE 65-300 Kushiiani Ave.

Wednesday, Aug. 8 - KAILUA OFFICE 626A Kailua Rd., Suite 109

Thursday, Aug. 9 - KANEHOE OFFICE 48-018 Kam Hwy., Suite 200

Reserve your place by calling 524-3333

HALE KOA Better Homes Realty, Inc.

73 APTS. PART. FURN.

LANIKAI Studio, must be employed, 1 person only. Call 261-6948.

CHOOSE one apt. Wahiawa \$300 or 2 bdrm. Waiolapa \$350 Handy shops, 913-0092 Rent Mart

HANDY base, Kailua apt. kids \$375 or larger 2 bdrm. Sali Lake \$450. 943-0092 Rent Mart

AAA Rent Mart, largest selection on Oahu. Call the experts at 943-0092 open 7 days, 1488 So. King St., Illi 8 Fee

73 RENTALS TO SHARE

KAILUA - near KMCAS view of ocean, share home large bedroom - facilities \$300 per mo., 247-8755 evenings - all day Fri.

MAILE/Waianae lovely lge. 1 bdrm., single, near wicker/drinker, sm. dep., util., private bath/entrance, light cooking. Call 696-4181.

Needed immediately: Roommate to share 3-bedroom Kaneohe house, \$300 per month 247-5109, leave message.

LANIKAI nr. beach, fully furn. & cool to sit-smoking/drinking. \$9-900. 262-9119.

ENGLISH teacher wants to share house/condo in Kailua/Lanikai. \$350-500. Ph. 923-1701.

LANIKAI room avail. in 3 bdrm. house nr. beach \$325-1/3 util. Call 262-9039.

KAILUA, own room & bath, nr. bus stop, share w/older woman, \$300 w/util. 261-7191 evs.

LANIKAI Furn. Rm. TV, stereo, wash/dry, microwave. \$375 + util. 261-9092

81 HOUSES FURN.

LANIKAI (Kailua) lovely 3 bdrm. 2 bath, nr. beach, short term/vacation ok. 262-5445

82 HOUSES UNFURN.

3 BDRM. House avail for 3 months, possible extension on 1 mo. to base. 262-6938.

83 HOUSES PART. FURN.

AAA Rent Mart, largest selection on Oahu. Call the experts at 943-0092 open 7 days, 1488 S. King St., Illi 8 Fee.

KAILUA: Kuaioi, lovely, spacious 4 bdrm. incl. guest cottage. \$1200 235-6972 Milia Ltd.

KAILUA: 3 bdrm., 2 bath, \$1200. Garrett (R) 262-8086. Neal Realty Inc. 262-2302

KAILUA - 3 bdrm. home, \$750. Utilities not included. Mrs. Jones, 262-8856

WAIANAHE: 10,000 sq. ft., 3 bdrm. excl. cond. \$625. Employed only, 87-078 Hoaha St., 668-1220

KANEHOE - Clean 3-4 bdrm., near school, solar system, \$895 mo. 235-1100 or 239-8279.

KAILUA 2 bdrm., 1 bath, garage, beachside of Kailua, \$850. Rels. Jack 254-4522

KAAAWA: 3 bdrm. ocean view, \$750, lease. 254-3994 or 261-5807

PICK one, starter home \$425 util. paid or 2 bdrm. Wahiawa util. \$450. 943-0092 Rent Mart

HANDY base, kids/pets ok \$400 or 2 bdrm. Kailua, incl. garage \$400. 943-0092 Rent Mart

86 CONDOS/TOWNHOUSES FURNISHED

MILILANI: Melemanu, 3 bdrm., 2 bath, parking, pool, end unit, overlooking stream. Avail. now. Contact Sandra at 625-1834 or 523-4739

ASSUME 12 1/2% 4 bdrm. \$683 a mo. nr. Mililani B. beach, Catherine (R) 668-1220

MAILE: Assume 10%, \$641 a mo. 3 bdrm. 2 bath fenced, excl. cond., near beach \$74,600, Catherine (R) 668-1220.

89 CONDOS/TOWNHOUSES PART. FURN.

MAKAHA Valley 2 bdrm., amenities, security, hot water \$525. Call 695-9756.

KAILUA lge 3 bdrm., 2 1/2 bath, rent/own plan possible. Sherlock Homes Realty 254-1100 or 254-2770.

88 ROOMS FOR RENT

KAILUA Lge home share female \$250 util, pet okay. Avail 9/1 254-4287 hot & cable. \$350; recliner \$75; swivel rocker \$125; rattan love seat \$225; beautiful king waterbed w/ A/M/FM stereo \$595; rosewood buffet \$650; sewing machine \$75; portable \$50 also dressers, mirrors, lamps & more. 261-8492, 320 Ulukou St., Kailua. WE ALSO BUY USED FURNITURE

EARLY American sofa/chair \$125; 2 pc. curved sofa, yellow velvet \$150. Ph. 488-1985

FREE PICKUP \$ CASH \$ for good used furniture. Rattan, wicker & beds. 261-8492 or 261-1406

USED refrigerators \$99 to \$125; all white, manual defrost 120 volt warranty. 488-1985

NEEDED BY 8/20 one bdrm. partly furn. apt. in Kailua. Call 235-4720.

WANT TO RENT: House/Apt. for family of five, Kailua/Kaneohe willing to pay up to \$850. Call Ter/Wed after 5 p.m. 695-9248

MALE symphony musician desires around floor apartment. Call 533-6987

WANTED: 3 bdrm. HOUSE to rent Kailua/Kaneohe, Kima-ala Family Rels. Avail. Need by Sept. 15. Up to \$650 mo. Ph. 263-4315.

114 REAL ESTATE FOR SALE

BEST BUY in Kaaawa! Beautiful 20 min. drive from Kaneohe. No traffic. Nicely upgraded 3 bdrm., 2 bath single family home with mountain view & steps to beach. Assumable FHA mg. \$107,000. ERA Magnum Properties, Al Martin (R), 487-7720.

NEW LISTING! Space, Value, Location, Convenience All in One! 3 bdrm., 2 bath, ocean & mountain view, extra storage, 2 covered parking stalls, even a hot pump for economy. Plus pool, sauna and playground. We've even included the appliances! And all at a great price \$79,000! Call Now, Lynn Wells (RA) 261-5649.

RENTALS Near KMCAS house or town-home. Rent/Own Plans available. Call today for info. 254-1100 OR 254-2770 Housing Department of SHERLOCK HOMES REALTY

FOR FAST HOME/Condo sales, serving all Oahu, Kathy Linker Realtors 395-1026

5 1/2 ACRES Colorado Re-processor. Pick up \$65 payments (105 payments \$65 - 8% interest rate). Call Finance Co. 806-376-8690

WAIANAHE - 8 03 acres of rich farm land with a 4 bdrm. 2 b home for only \$379,000! MK 1-8-8-8-9. M/S 40297. Kenneth Mori (R), 841-2220 Marcus and Associates, Inc. 693-7446

REAL ESTATE

John Daughters & Associates, Inc.

REAL ESTATE SALES

COMPUTERIZED PROPERTY MANAGEMENT

261-9111 262-9898

120 FURNITURE

5 PIECE dinette sale - choose from wood or vinyl seats \$391 w/ \$129. Call 488-1985

PANADISE USED FURNITURE Antique oak rocker \$295; beautiful sofa beds from \$275; bunk bed & matching dresser \$350; rattan chairs from \$45; mahogany Vanity w/rd mirror \$175; all wood drop leaf table & 4 chairs \$295; oak din chairs \$35 & \$45 ea.; Korean Tanu \$350; recliner \$75; swivel rocker \$125; rattan love seat \$225; beautiful king waterbed w/ A/M/FM stereo \$595; rosewood buffet \$650; sewing machine \$75; portable \$50 also dressers, mirrors, lamps & more. 261-8492, 320 Ulukou St., Kailua. WE ALSO BUY USED FURNITURE

FREE PICKUP \$ CASH \$ for good used furniture. Rattan, wicker & beds. 261-8492 or 261-1406

USED refrigerators \$99 to \$125; all white, manual defrost 120 volt warranty. 488-1985

NEEDED BY 8/20 one bdrm. partly furn. apt. in Kailua. Call 235-4720.

WANT TO RENT: House/Apt. for family of five, Kailua/Kaneohe willing to pay up to \$850. Call Ter/Wed after 5 p.m. 695-9248

MALE symphony musician desires around floor apartment. Call 533-6987

WANTED: 3 bdrm. HOUSE to rent Kailua/Kaneohe, Kima-ala Family Rels. Avail. Need by Sept. 15. Up to \$650 mo. Ph. 263-4315.

114 REAL ESTATE FOR SALE

BEST BUY in Kaaawa! Beautiful 20 min. drive from Kaneohe. No traffic. Nicely upgraded 3 bdrm., 2 bath single family home with mountain view & steps to beach. Assumable FHA mg. \$107,000. ERA Magnm Properties, Al Martin (R), 487-7720.

NEW LISTING! Space, Value, Location, Convenience All in One! 3 bdrm., 2 bath, ocean & mountain view, extra storage, 2 covered parking stalls, even a hot pump for economy. Plus pool, sauna and playground. We've even included the appliances! And all at a great price \$79,000! Call Now, Lynn Wells (RA) 261-5649.

RENTALS Near KMCAS house or town-home. Rent/Own Plans available. Call today for info. 254-1100 OR 254-2770 Housing Department of SHERLOCK HOMES REALTY

FOR FAST HOME/Condo sales, serving all Oahu, Kathy Linker Realtors 395-1026

5 1/2 ACRES Colorado Re-processor. Pick up \$65 payments (105 payments \$65 - 8% interest rate). Call Finance Co. 806-376-8690

WAIANAHE - 8 03 acres of rich farm land with a 4 bdrm. 2 b home for only \$379,000! MK 1-8-8-8-9. M/S 40297. Kenneth Mori (R), 841-2220 Marcus and Associates, Inc. 693-7446

REAL ESTATE

John Daughters & Associates, Inc.

REAL ESTATE SALES

COMPUTERIZED PROPERTY MANAGEMENT

261-9111 262-9898

120 FURNITURE

CHILD'S twin bed, box spring mattress, metal frame & bookcase headboard \$75. 422-5753 evs.

REWARD \$5 to \$500 For your furniture in good condition. We buy it all and pickup free islandwide. 488-1985 10-8 p.m. any day

KING waterbed, w/ full length mirror, complete w/ 6 sets of sheets, heater, comforter, 6 drawer pedestal, \$1000. 257-3108 or 254-4841, Sgt. Bush.

LOVESEAT, excl. cond. \$150. Call 949-2939

MAPLE table w/ 4 chairs and hutch/buffet \$400/offer. Sofa \$350/offer; desk and chair, \$35; 3 drawer chest \$25; chair w/ stool \$35; Weber Grill \$30. evs. 833-8988

KING size waterbed, complete with heater, \$200. Call 263-4897, afternoons

FURNITURE WANTED TOP CASH \$\$\$ for dressers, beds, rattan, wicker, etc. Call Mon.-Fri. 8 a.m. to 5 p.m. 247-6621

RATTAN Dining set 3x5 ft. glass top table, 6 chairs, new cond. Only \$500. Ph. 947-9253.

HAWAII Kai: Furn. Overload! Drexel plush snugle sofa-lrg, Trundle bed set, Maple pool bed set, Dining table set, Swivel desk chair, more. Thurs. Sun. 9-5. 125 Koko Isle Cir. 395-4885.

126 MISCELLANEOUS

FREE: Frisky male black & white kitten, 7 weeks old. Call 396-0790

FREE: Lovable, female, miniature shepherd mix, 1 yr., spayed, all shots. 395-3367.

CANOPY Crib \$50. Baby crib \$20, lamp \$12 and table \$20. Ph. 254-1909.

2 END tbls. \$35 ea.; playpen \$30; ovr. bike \$15; chandelier \$10; dbl. bed \$25. 261-1691.

25" CONSOLE Color TV RCA \$150; Pioneer receiver & 2 speakers \$200. 455-9678. 456-1747.

YARD Sale: Kids clothes, rollaway bed, tools. Much more. 1113 Naniiali St., Aug. 4, 8 to 1.

126 MISCELLANEOUS

1. PFAFF portable sewing machine. Excl. cond. w/ attachments & carrying case. \$75/offer. 623-8259.

WET Suit Tops, Surfboard, men's bike, mu mu's (lge), men's clothes (lge). Sat Aug. 4-8 a.m. 582 Iona St., Enchanted Lakes.

FRESH from New Orleans, Louisiana premium blend coffee with Chicory Reg 3.36 lb. 395-5917.

NEW picnic tables \$80. Birch wicker \$65. Phone 293-8392

NOPE! Good condition, only \$250

ROLLAWAY Bed Sofa/entables ea \$45. Maytag Dryer as new \$195. 261-8418

SOLID Oak Coffee Table with glass panels \$75 Ewa Beach Area 499-1983

VERY Large Hand Carved Palauan Story board one of a kind. \$3000 Ph. 395-8807

MICROWAVE Panasonic \$NE \$650 Multi-power, 1 yr. old Asking \$250 Ph. 247-6707

BANANA Trees, Ficus, other large plants, large Free Dog house, you move 261-5157

EARLY American Couch plus chair \$160 639-0771

For Sale: 13,000 BTU air conditioner. Call 261-7745

ARE you moving? Need help cleaning? We can get you ready for inspection. 495-2838

RCA Video disc player and 10 movies. A steal \$180. Call 247-3025

SEVEN Piece Livingroom set \$495. 474-5245 or 422-7126 ask for CE 1 Smith

UPRIGHT Freezer-not used in last yr. You/Pu \$100. 623-6576

Wedding dress size 5 with pearl Juliet cap, veil 235-0581 after 6 p.m. \$100/offer

QUEEN size mattress new \$180, stereo realistic camera w/color section \$300, cruiser bike \$175. Hully bike \$75; Atari w/10 games \$160; sewing machine \$40. Ph. 668-7408

SWAP meet vendor's. Thousands new kitchen gadgets \$150 takes all. 254-3168

GOLDEN floral couch & loveseat, 2 Penny's 10 spcl. bike, dining table, waterbed drawers, built in room divider, 262-0632

KINGSIZE Waterbed, bookcase headboard, rails, & 6 drawer base, inns, like new \$500/offer. Ph. 423-1958

PVC pipe 200 to 300 ft. sizes 3/4" to 2", used, reasonable. Ph. 235-1206

126 MISCELLANEOUS

VACUUM Cleaners, used, Electrolux, Filter Queen, Kenmore. Hoovers and others. Kirby Center of Kailua, 146 Kekili St., 262-2011

TAX headaches? Bookkeeping/accounting, problem solvers. Reasonable fees. Call John 523-6755.

MATCHING sofa, love seat, chair w/ottoman, light green, \$300/offer. Call 625-2521 after 6:30

SUPER Genie Hi-X racing bike chrome alloy rims, value \$330, offer \$150. 235-2528

HOUSEHOLD items must sell, 580 Kawanui St., Kailua, stove & ref. 6:30

EXERCISE bike, Schwinn XR-8 model speedometer tension control, lme. This is the same model they used in all the gyms. Shining new, only used a few times \$225 Ph. 247-1774 or 235-2333

CAR Seat, one step \$45; antique oak chair \$350, overstuffed arm chair, earphone, line new \$250. Ph. 624-4347.

MONGOOSE Bicycle, good cond. \$100. Ph. 262-6286

PINATAS Care Beds, Smurfs, Etc Candy & Toy filled Delivery avail. Call 624-6016

CENTURY 200 car seat, new \$50; baby dresser \$50, Stirling walker \$18; folding door \$10; sewing machine \$25, convection oven \$50; girls 20" bike \$30; stereo \$25; hitabeat couch double \$125. 623-4786

RAINBOW vacuum, cost \$700, must sell, \$250. Call 922-4875 or 735-2055

ELECTROLUX vacuum cleaner, cost \$800, must sell for \$300. Call 455-9374 ask for Shirley

WORLD Book Encyclopedia, 1983 display set. Make offer. 261-2006 or 261-8554

MAGNAVOX 25" Color Console, 2 yrs. old, good condition. \$325 Ph. 247-1230

COLOR TV, \$135, ref. \$250; elec. range, \$195; washer, \$150, dryer, \$110; stacked combo, \$295; guaranteed. 528-3122, 262-7693

5 PC Rattan living room set w/glass table \$400. His & Hers Antique Dressers \$500. 400 lb Ice Maker excl. cond. \$800. Brown side-by-side ref. w/mic maker \$700, cold table 7 stainless steel w/5ome containers \$700. All Prices Negotiable! Call 261-8260, leave message.

CERAMIC Duncan kiln \$700. Call 499-2261

***128 STEREO & TV**

31C. stereo system JVC, BSR turntable, w/2 Maximus speakers, \$250. Call evenings 941-9546

***131 WIKI WIKI FREEBEE**

FREE: Terrier, 4 years old, excellent companion/guard dog. Call 254-4407

FREE: Beautiful Calico Kitten to a good home 839-1471

FREE: mixed breed puppies. Call 247-3910

FREE: Irish setters, loving and house broken. 235-0654

FREE: to good home, 14 week old kitten w/beautiful markings. Siamese w/liger stripes. 455-8571

Free calico cats, 1 1/2 yrs old. Spayed & vaccinated to loving families. 947-9138

FREE: Boxer/Shepherd, male, active, 9 mos., 45 lbs. Needs home w/walled yard. 621-2588

FREE: 2 lively healthy, female kittens. 254-4680

FREE: Beautiful healthy 1/2 Doberman, 1/2 Pit Bull puppies, 7 weeks. Call 623-6239

FREE: Kittens that will win your heart. Part Siamese. 696-7824

FREE: adorable loving kittens need good homes now. Call 254-5709

WHIT, deaf, blu & brwn eyed male cat w/min tail, neutered & shots. 261-1018

FREE: Female gray cat spayed, to good home. 254-5544

FREE: To good home 1 mother cat, 3 calico kittens & 1 black kitten. 668-2259

FREE: Kittens orange & white stripes mtd need inside loving home. 671-7895

FREE: 2 kittens Call Chris at 545-5433 between 9 & 5 or 247-1602 after 6

FREE: Spayed female cat, 1 1/2 yrs. old, has all shots, orange/white. 261-4588

MISTER personality! Large, shaggy dog, age 3, free to loving home w/fenced yard. Barbara. 545-3694

FREE: 3 kittens, 1 calico, 1 blk. & wht., other gray & wht. 7 wks. old. 536-0593

FREE: adorable loving kittens, need good homes now. 254-5709

FREE: kittens to good home. 636-8209

FREE: Cats, 3 females, spayed, shots, friendly to good home. 624-2285

FREE: White spayed, female cat to loving 1 cat family. 845-2884

***136 MISCELLANEOUS WANTED**

WE BUY USED FURNITURE TOP CASH & FREE PICKUP ISLANDWIDE 498-1965 7 DAYS

CASH! for used/broken color TV's, refrigerators, washers, dryers, VCR's, computers, etc. Free pick-up. 626-3122, 262-7630

WANTED: Men's & women's 10 speed bicycles, a child's carrier seat. 254-1189 evenings

WANTED: Infant changing table in good condition. 247-2566 after 5

WANTED: dress dummy, for home sewer. 395-9051

WE BUY USED FURNITURE. WE PAY CASH AND PICKUP. CALL 261-8492 or 261-1406

***144 MUSIC SALES AND SERVICE**

EXPERT PIANO MOVING. Crating, shipping. 833-1859 S & S Delivery 985-7295

FOR Sale: Hohner electronic piano, excl. cond. Call 732-6607 between 8 a.m.-4:30 p.m.

IBANEZ Guitar, Solid body/case, Gibson amp, excel cond. \$475 Ph. 486-3531

PIANO TUNING. Since 1963 \$20 offer. Serving the Islands finest teachers, pianists. Alton Slater 941-8857

1981 FENDER Rhodes piano, 54 keys, excl. cond. Asking \$500. Will consider offer. amplifier V.T. Phasor twin amplifier made in Canada, 2 1/2" speakers 60 watts, 1 jack outlet, good cond. \$250. Call 923-1436 John

***144 MUSIC SALES AND SERVICE**

FOR Sale: Bessa Hoya spinet piano, good cond., \$1000/best offer. 254-6247 after 4 p.m.

FOR Sale: Fisher 220 amplifier, 55 watts, \$20. Call 456-3780

KING trumpet, excl. cond., \$300. Takamine 12 string, \$300. Steve 474-8137, 422-2178

CHICKERING spinet piano. Price \$1095. Call 261-2006 or 261-8554

***146 BOATS SUPPLIES & SERV.**

25' SLOOP "Semper Fidelis" New rigging just hauled & painted, Johnson O/B. Great family boat. \$16,000 negotiable (O) 488-9534 (H) 235-3358

18' AMERICAN Mark II 120hp 1/0, vesis. CB \$4195. Call 395-7344

21' AQUARIUS sailboat sleeps 5, new sails, VHF, great family cruiser \$6000 Ph. 572-8411 eves.

18' LARSON tri-hull, 165 HP, Chevy 250 I/O, Mercruiser, EZ load trailer. \$2500/offer. 487-9613

27' SAMPAN, 4 cyl. Perkins (diesel), 105 gal capacity tank. Call to see 455-3029.

16' HOBBIE Cat with trailer and accessories. \$1000. Call 254-1106.

17 FT. REINELL, 165hp, Mercury, I/O, excl. cond., CB, skis, canoe, outboard, Watkins trailer. Like new \$5500. 235-4264 Also 17 ft. Calkins trailer, \$200.

18' MARLIN jet-drive, V8 engine w/trailer, extras, excl. cond. \$4600/offer. 395-1708

ART NELSON SAILMAKER, INC.

WE at Art Nelson's would like to wish all the Clipper Cup participants good luck and we would like to thank all the volunteers!

537-9958 537-9950 Woodward 282-6238

***150 LIVESTOCK**

PIG FOR SALE. 300 lb. Boar. \$250. Call 261-0489 eves.

***84 CLEARANCE IN AUGUST**

84 Honda \$2000 Pickup (M3001) 5 spd, cargo, slp, comp, dual mirrors, radial tires. SALE PRICE \$5775

84 Chevy 810 Pickup (J1350) V8, 5 spd, air, many other options. Retail \$11,900. SALE PRICE \$8975

84 Chevy 1/2 ton C10 Pickup (L13800) 8 cyl, auto, power steering + more. Retail \$11,300. SALE PRICE \$8875

84 Chevy 1/2 ton C20 Pickup (L13428) 8 cyl, 8 spd, 4 spd, + more. Retail \$11,100. SALE PRICE \$8875

84 Chevy 810 4x4 Pickup (L13701) V8, auto, 4 spd, + many other options. Retail \$12,075. SALE PRICE \$10,975

84 Chevy 1/2 ton C10 Pickup (L13700) 8 cyl, 4 spd, + many other options. Retail \$11,075. SALE PRICE \$10,475

84 Chevy 1/2 ton C10 pickup 4x4 pickup (L13810) V8, 4 spd, air, + many other options. Retail \$11,042. SALE PRICE \$12,975

J.H. Chevrolet/Mazda TRUCK CENTER. 98-015 Kam Hwy. Ph. 487-0770

CUTTER FORD TRANSPORTATION SPECIALS

89 MUSTANG 195

71 DATSUN 195

75 GRAND AM 295

75 PINTO 395

77 SCAMP 495

74 AMI 595

76 VOLARE WALON 695

76 CORDOBA WALON 995

77 CHEVY 90A 995

75 VW BUG 695

76 ROADRUNNER 795

78 SKYHAWK 1195

83 KAWASAKI 1295

78 DATSUN 10 1495

77 CAMARO 1995

77 F100 PICKUP 2195

77 F1100 2095

83 F1000 3995

98-015 Kam Hwy., A1EA • Ph: 487-3811

***108 AUTOS WANTED**

NEED drive shaft to fit 75 Ford 4 x 4. Call 621-8244 eves

***166 TRUCKS & PICKUPS**

Must Sell 80 Mazda pickup truck. Weber carb, 4 spd, AM/FM cassette \$2700/offer. Call 237-8030.

81 DATSUN 4 x 4, AM/FM cassette, excellent condition. \$5400. Call 671-1095

78 FORD Courier P/U, 5 spd., camper shell, AM/FM cassette, sun roof. \$2,850. 238-9729

75 FORD F-100, rack, tool chest, needs minor work, good work truck. \$950. 261-6948

***181 PET SUPPLIES SALES & SERVICE**

AKC Dachshund, standard, 6 weeks, male & female \$200. Call 262-8002

CFA Cream Persian Kitten, Championship line, 8 wks. \$175. Ph. 254-5448.

AKC APRICOT Poodle puppies, males, 2 toys, 1 teacup. \$350. Ph. 254-3973

***171 MOTORCYCLES SALES & SERVICE**

FOR Sale, '82 Kawasaki GPZ 550, runs well, very fast \$1500. 833-4201 ask for Bill

'81 YAMAHA 400 Special, black \$950 or negotiable runs great, excl. cond. Call 293-5488 after 6:30 p.m. or before noon Fri.

80 YAMAHA Enduro, XT500, excl. cond. \$795. Call 254-1753.

HONDA: CB 360 for parts, will run \$100. Ph. 262-6286

'82 HONDA CB-750K, 1600 mi., excl. cond., \$1800 firm. Steve 474-8137, 422-2176

***172 AUTOS FOR LEASE**

THRIFTY Rent A Car is offering "Golden Oldies" from \$75 per week. \$225 per month. Ph. 636-2388

***175 VANS, CAMPERS & JEEPS**

1980 C-7 LAREDO Jeep \$5500 or best offer. Call 536-7566 after 3 p.m.

CUSTOM Truck Racks & Rollbars Call 841-0158

78 Custom Van, 3/4 ton, p/a, auto, excellent. \$3900. Call 499-2297

4x4 SPECIALS

'81 Jeep 4x4 (J1790) 4 spd, power steering, AM/FM tape, roll bar. SALE PRICE \$9075

'81 Jeep 4x4 (J1790) 4 spd, power steering, AM/FM tape, roll bar. SALE PRICE \$9075

'78 International Scout 4x4 4 spd. (L14007) 4 spd, power steering. SALE PRICE \$3875

'71 International Scout 4x4 4 spd. (L14007) 4 spd, power steering. SALE PRICE \$1875

J.H. CHEVROLET/MAZDA TRUCK CENTER. 98-015 Kam Hwy. Ph. 487-0770

***178 AUTOS FOR SALE**

ADMIRAL R-A-C AIRPORT AREA

Free pick up, delivery airport, Waikiki and most Military Bases. \$11% daily + up. Weekly, Monthly rates plus ins. Call 836-6886 or 836-7796 2848 Makumoa St.

***176 AUTOS FOR SALE**

TOP DOLLAR PAID DESPERATE NEED CLEAN CARS PAID FOR OR NOT J.H. CHEVROLET/MAZDA 836-1222 2808 N. Nimitz Hwy.

AMC

'74 GREMLIN - Must sell transferring - great car \$1200. Call Nancy 488-4847

'78 AMC Pacer DL wagon, good cond., lots of new parts, \$1500 or offer. 456-3853

BUICK

'73 BUICK Century \$500 Call 261-3958

CHEVROLET

'77 CHEVY Malibu Classic 4 dr., moving. Must sell \$1300/offer. Ph. 235-6963

'75 CORVETTE Auto, T-top, AM/FM cassette stereo, excellent condition. "Offer" Phone 247-2495 Carlos

DATSUN

'81 MAXIMA, silver/powder, 28,000 miles, beautiful condition, no rust. \$7900/offer. 257-3319 or 254-3030.

'75 MARK II 6 cyl., new battery, tires, brakes, fuel pump, paint, \$1000. 235-4328

'78 DATSUN B-210, excl. cond., low mileage, \$1500/offer. 254-3145 or 254-5609

1982 Datsun B210 5 spd. \$3195 DOLLAR CAR SALES 926-4256 452 Kalewa Down Lagoon Drive near the Airport

DODGE

MUST Sell, '72 Dodge Custom Comet, 4 dr. 8-cyl, a/c, auto. \$600 or best offer 261-0087.

FORD

'71 LTD Brougham, 78,000 mi., all power except windows, spotless, auto, \$1000/offer. 261-5905.

'79 FIESTA, good shape, \$1100 or best offer. Call 259-5185 evenings

'77 MONTE CARLO 2 dr. 4 cyl. 4BY061

'81 FORD Fairmont, 4 dr., \$3700. Ph. 471-0081 or 422-5024 after 4 p.m. Doll.

HONDA

'80 PRELUDE sun roof, stereo, bronze, 36,000 mi., excl., \$5500. Ph. 281-3817.

TONY HONDA NOW IN PEARL RIDGE 98-015 Kam Hwy 487-5595

HOT RODS

'71 1200 Coupe, custom body, Weber, headers, race cam, mags, new radiats, many other parts. \$1500. 262-9878 leave msg.

Going to OREGON to buy a new car or pickup? -contact- ROBERTS & REIFIELD PORTLAND Write for price lists and full information ANY MAKE - ANY MODEL (Must be used at Portland International Airport) ROBERTS & REIFIELD 8720 S.W. 62nd Portland, Oregon (503) 251-2851 Conveniently located just 3 minutes from Airport!

MAZDA

'83 MAZDA wagon, 5 spd., AM/FM stereo \$5700. Call 422-6079 evenings.

MERCURY

'78 MONARCH, excl. cond. \$1900 Call 261-3091

MG

'78 MGB convertible, very good cond., 26,000 mi. \$2300 Bob 261-0231 hm 536-1721 wk

OLDSMOBILE

'70 CUTLASS "442" rebuilt engine, headers, hotkey, 12 top, AM/FM cassette stereo, \$1400/offer. Call 247-2495

'77 OLDS Cutlass Supreme, very well maintained. Must Sell \$2750 or best offer. 257-3155 days, 941-7088 eves.

'74 OLDS Cutlass Supreme, 4 dr., p/w, p/a, excl. cond., no rust, 35,000 mi. Asking \$1995. 261-2826

1980 OLDSMOBILE Delta 88 Royale 4 dr., excl. cond., excl. family car \$5500/best offer. 835-7831.

1977 OLDSMOBILE STARFIRE runs well \$1200. Ph. 422-6325

PONTIAC

MUST SELL '73 Grand Prix, runs good, body fair. PS, PB, \$400 or best offer. 254-3433.

MUST Sell: '76 Pontiac Astré wgn., auto., 2 dr., good cond. Asking \$850/offer. 262-7943

PORSCHE

'72 PORSCHE, 65,000 miles, rebuilt engine, Webers carburetor, new paint, clutch, AM & FM cassette stereo, excellent condition \$4100 or offer. Call 247-2495

TRIUMPH

'77 TRIUMPH TR-7, new radiator, battery, valve job, automatic, needs alternator. Call 821-8244 eves.

TOYOTA

'74 CELICA 5 speed, GT, AM/FM stereo cassette w/quickset, sharp looking. Crager wheels \$2450 or best offer. Call 456-9288

VOLKSWAGEN

'70 VOLKS Bu. good condition. Asking \$1500 or best offer. Call 235-1207

'73 MEYERS Manx SR, orange fiberglass body, flip up doors, 1600 engine. Must seal-Make offer. 396-6506

'76 DIESEL Habibi, 35,000 mi., rust, 5 spd. beige. \$1800/offer. 254-3450

'88 VW, 1650 rebuilt engine, auto., good cond. Best offer. Call 262-6280

'76 SCIROCCO, excl. cond. Must sell, AM/FM cassette \$3600/offer. 261-5730

THE BATTERY FACTORY
AUTO BATTERIES
 New, Used, Reconditioned, Specials
\$25.00 trade and up
 •Motorcycle •Marine •BATTERIES
 •Jet Skis •Wheelchairs Priced Right
 747 Kapiolani Boulevard
 533-3312

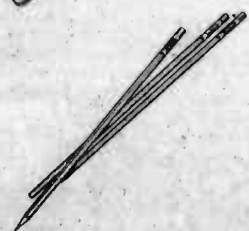
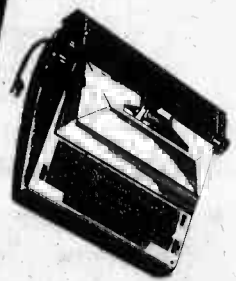
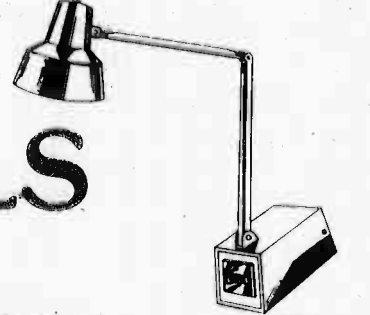
***76 FORD Granada Cpe. \$1495**
 2 dr., 8 cyl. auto, p/a, a/c, vinyl roof 810972
***80 CHEVY Chevette \$2395**
 4 dr. auto, 4 cyl, AM/FM case, BACCSS
***70 TOYOTA Corolla \$295**
 4 dr. auto, AM/FM stereo AFY939
***80 DATSUN B210 \$1995**
 2 dr., 4 spd, 1100cc
***78 DATSUN 280Z \$4995**
 5 spd, AM/FM 2609120
***77 TOYOTA Corolla \$2295**
 2 dr. auto, 4 cyl, AM radio AX958
 Offer good Aug. 2 to 9
PEARLHARBOR AMC/Jeep
 Waipahu We buy cars fool 677-0709

We're #1 THANKS TO YOU
CUTTER DODGE AIRPORT
'77 MONTE CARLO \$2675
'78 SUBARU \$3175
'83 FURI FUTURA \$5275
'80 CHAMP \$2775
'71 SATELLITE \$675
'66 PORSCHE 912 \$6675
'70 MONTE CARLO \$2875
'81 MUSTANG \$6175
'83 REGAL \$7575
 Your Only Intown Dodge Dealer
 3149 NIMITZ HWY. 836-0626

WAIPAHU SHELLY MAZDA

'81 CHEVY CHEVETTE 2 dr. auto, 2 cyl, Low Miles, AWU777 \$2795	'81 JEEP SCRAMBLER Based on BU3014 \$6995	'79 MERCURY CAPRI 6 cyl. auto, a/c, BARS42 \$3495
'80 GLC S/W Auto, AM/FM, A/C, 285 \$2795	'80 DATSUN 210 4 dr. auto, MD113	

FALL SCHOOLS



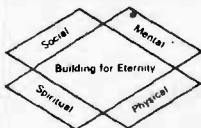
THIS SUPPLEMENT, OR COMMERCIAL ADVERTISEMENTS WITHIN, DOES NOT CONSTITUTE AN ENDORSEMENT BY THE MARINE CORPS OR THE DEPARTMENT OF THE NAVY

KAILUA MISSION SCHOOL

160 Mookua Street

A Seventh-day Adventist school serving students of grades K-8 who wish the benefits of a Christian education.

Accepting applications now for '84-'85.



Limited Openings

Call

261-0565



ELLEN MASAKI
SCHOOL OF MUSIC

"Setting The Tempo..."

PIANO LESSONS
PRIVATE OR GROUP

Also Instructions In:

FLUTE • CLARINET • VOICE • CELLO
VIOLIN • VIOLA • GUITAR • THEORY

University Square • 2615 S. King St.
Suite 208, 209, 308, 309

Kaneohe 45-596 Kam Hwy., Suite 209

Ph. 235-1195, 946-0330, 734-5772

PATHWAY PRESCHOOL

Now Accepting Applications
For 2 to 5 Year Olds

- Degreed & Experienced Staff
- Modern Facilities
- All Day Care 6:30-5:15
- Openings Are Limited

FULL DAY &
HALF DAY PROGRAM

Call 488-1951

98-1022 Komo Mai Dr., New Town Estates, Aiea



TRINITY

CHRISTIAN SCHOOL

(Formerly Trinity Children's Community)

262-8501

875 Aulua Road, Kailua, HI.

CONVENIENT TO KANEOHE and KAILUA

A CHRISTIAN DAY SCHOOL DEDICATED TO EXCELLENCE IN
SPIRITUAL AND ACADEMIC INSTRUCTION.

Enrolling Now for Fall of 1984

KINDERGARTEN
PRESCHOOL — DAY CARE
BEFORE AND AFTER SCHOOL

OPEN HOUSE
August 4 9-12

CHURCH OF THE HOLY NATIVITY SCHOOL

Pre-School through 6th Grade
CO-EDUCATIONAL ALL RACES & RELIGIONS

TESTING NOW FOR
FALL '84

Vacancies Preschool
Grades 3, 6

5286 KALANIANA'OLE HIGHWAY • PHONE 373-3232

Cannon's Business College is celebrating your future!

Cannon's Business College is celebrating its fiftieth anniversary... fifty years of successful graduates in the fields of

- Accounting
- Bookkeeping
- Business Administration
- Computer Information Systems
- General Office
- Hotel Operations
- Secretarial
- Word Processing Systems

At the same time, Cannon's is also celebrating the Grand Opening of its new campus at

1500 Kapiolani Boulevard

With fifty years of experience and the most modern business training facility in Hawaii, Cannon's is certainly looking toward your future! Your success is our success! Let's celebrate your future at our Open House on

Thursday, August 16, 1984
4-8 P.M.

For information regarding our Open House or our next start date call us at 955-1500



The business whose business is to help you succeed.

LE JARDIN ACADEMY

James M. Taylor, Headmaster
Kailua

(Pre-Kindergarten through Grade Eight)

Well Known as a School of
Strength and Academic Achievement

Believes emphatically in children's right to a thorough basic education and a phonic approach to reading and spelling (the Spalding Method) in an atmosphere of consideration and happiness.

Limited number of Summer School openings (K-Through 8) in excellent Hawaiian, mathematics, comprehension, astronomy, art, and writing courses and in the Spalding phonics approach to reading and spelling.

For Summer or Regular School write:

Director of Admissions

Mrs. Jean Bebb

1110-A Kailua Road

Kailua, Hawaii 96734 or phone 261-1396

Le Jardin does not discriminate on the basis of race, creed, color, or sex in personnel or pupil admission policies.

Serves Windward Community and all other areas of Oahu

Hawaii Loa College

21 years old

Hawaii Loa College is a private, coeducational, four-year college located just minutes from downtown Honolulu at the windward base of the Pali. It is accredited and approved by the Veteran's Administration. For 21 years, Hawaii Loa has been offering degree programs with a strong liberal-arts core.

International Baccalaureate: Students who

have completed the 10th grade may enroll in the two-year International Baccalaureate diploma program at Hawaii Loa College, earning a regular high school diploma and at the same time doing college work.

The IB diploma is recognized worldwide for second-year standing in most United States' colleges and universities. The IB goal is to educate

an international community of skilled, thoughtful, compassionate, and responsible citizens whose commitment to their fellows and communities transcends national, cultural, and social barriers.

IB classes begin on Aug. 27. Applications for the 1984-85 class must be received by Aug. 15. Applications for the 1985-87 class open Sept. 15.

Scholarships of \$1,000-\$6,000 for the two-year program are available.

As a part-time option for 1984-85, students not able to do the full IB may take part in a Marine Science class (M, W, F 2:30-3:50) and/or community service during vacation or after school.

For more information, call the International Baccalaureate Office at 235-3641, ext. 182.

Continuing Education: The Division of Continuing Education extends the college's educational programs to the community at large by offering a variety of courses conveniently scheduled on weekday evenings and on Saturdays.

For more information, call the Division of Continuing Education at 235-3641, ext. 160.



Need a school for your child with reading and learning problems?

Fairhaven School SCHOLARSHIPS now available

- Utilizing the Powerful Orton Phonics Reading
- Diagnostic Testing
- Individualized Instruction

J. Sprague, Reading & L.D. Specialist, Director
944-0173

ST. LUKES PRE-SCHOOL & DAY CARE CENTER

AGES: 2-5
Hot Lunches & 2 Snacks



HOURS: 6:30 A.M. - 5:30 P.M.
After School Care

QUALITY CARE & TEACHING

45 North Judd St. PH. 533-7221



PIANO LESSONS

Private instruction by graduate of Berklee College of Music — Boston, Mass. All styles - theory - arranging techniques.

Call Janice 677-7511 Waipahu

HOLY TRINITY CATHOLIC SCHOOL

5919 Kalaniana'ole Hwy.

GRADES 1 through 8

Openings in most grades.

Apply at school office
Mon. & Fri. 8 a.m. to 2 p.m.

Ph. 396-8466 or 396-9182

DISCOVER Our Redeemer Lutheran Schools

Offering academic excellence in a Christian environment.

God gave your child special gifts. We will help you to develop them.

FALL PROGRAM

Grades Kindergarten through Twelve

Limited Space Available

Grades 3, 7 & 8

Openings in grades 9 through 12

Our Teachers Care . Small Classes Help
Phone 949-5302 for Brochure and Information



Hale Keikilani School

in Kaneohe

PRESCHOOL, K-FOURTH GRADE
1984 & 1985

- Emphasis on academic and character building
- Intensive Phonics
- Love and discipline
- Quality Education in a Christian atmosphere.

A Ministry of Kaneohe Church of the Nazarene

CALL FOR MORE INFORMATION
235-8787



D's PRESCHOOL & DAY CARE CENTER HOME

serving Windward Oahu since 1970

1/2 day — Preschool hours:

8:00 a.m. to 11:30

Full day — Day Care Services:

6:00 a.m. to 8:00 p.m.

11:30 a.m. to 5:30 p.m.

WE OFFER A 3 DAY PROGRAM

MON., WED., FRI. IN ADDITION TO

OUR 5 DAY M-F PROGRAM.

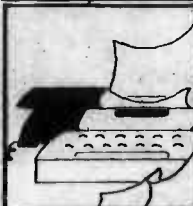
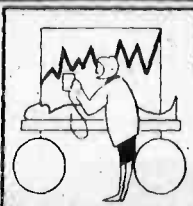
Daily Activities include:

- Aerobics
- Music
- Ramalda Spalding Reading Program
- Fun w/numbers — Math Program
- Science & Exploration
- Hawaiiana
- Social Play

Student teacher ratio — 8 to 1

for more information call

261-8410



med-assist school of hawaii

1164 bishop st., suite 612, honolulu, hi 96813 808/524-3363



PROGRAMS IN

- medical assistant
- clinical assistant
- medical secretary

Now Accepting Enrollment

Call for Brochure

524-3363

Licensed by DOE

Member National Health Careers Council

Fully Accredited By

Accrediting Bureau of Health Education Schools

Financial Aid Available for Medical Assistant Program

Approved for VA Benefits

St. Francis private school for girls

Saint Francis is a private school for girls in grades 7 through 12 located in Manoa Valley, adjacent to the University of Hawaii. The school is owned and operated by the Sisters of Saint Francis who are in their 101st year of service and dedication to the people of Hawaii.

The student body of 400 girls benefits from small classes in an atmosphere of achievement. Saint Francis offers a personalized education with a college preparatory curriculum.

Honors classes, independent study and seminar programs are available for highly motivated students.

Advanced students

may apply for early admissions to the University of Hawaii while attending Saint Francis.

Extracurricular opportunities include speech, math league, student publications, guitar group, hula-song competition, choral festival, special interest clubs and participation in the ILH sports program.

The student body represents a wide variety of ethnic and cultural backgrounds.

For application and information, call the admissions office at 988-4111. Limited openings are available in junior high and grades 10 and 11.

MATHEMATICS LEARNING DISTRESS?

THE MATHEMATICS LEARNING AND INSTRUCTION (MALE) CLINIC for M.L.D. COMPREHENSION THERAPY SERVICE
Also private instruction in the MATHEMATICAL ARTS
For all ages and educational levels, and INSTRUCTOR EFFECTIVENESS TRAINING for parents, teachers, tutors & coaches

Non-profit 261-8106 Sliding Scale

HAWAII LOA COLLEGE

announcing a certificate program in

PROJECTIVE TECHNIQUES

Analysis of drawings, stories, words, colors, dreams, myths, etc. Begins: 51 August, Friday 6:45-9:00

EVENING/SATURDAY SESSIONS BEGIN AUGUST 27

COMPUTER COURSES

- NON-CREDIT CLASSES FOR BEGINNERS AND EXPERIENCED COMPUTER USERS
- COMPUTER EDUCATION FOR CHILDREN AND TEENS
- COMPUTER CERTIFICATE AND DEGREE PROGRAMS WITH BUSINESS APPLICATIONS OR TECHNICAL ORIENTATIONS

GENERAL INTEREST CLASSES

FROM ART TO ZEN AND PSYCHOTHERAPY



INTERNATIONAL BACCALAUREATE

ATTENTION: HIGH SCHOOL STUDENTS

You can complete your junior and seniors years of high school at HAWAII LOA COLLEGE and graduate with a diploma that can replace your freshman year at college.

- INTERNATIONALLY RECOGNIZED HONORS PROGRAM
- SCHOLARSHIPS AVAILABLE (\$1,000-\$6,000 FOR 2 YEARS)
- PART-TIME OPTIONS: HUMAN SCIENCE, COMMUNITY SERVICE
- APPLICATION DEADLINE FOR 1994-95 CLASSES: AUGUST 25
- APPLICATION FOR 1995-97 CLASSES: AFTER SEPTEMBER 15



A group of happy youngsters from K's Playschool, Inc.

GIVE YOUR CHILD THE MONTESSORI ADVANTAGE

Applications Now Being Accepted For Fall
ST. JOHN'S MILILANI MONTESSORI CENTER
*Outstanding Program *Wonderful teachers
*New Directorship
VISIT US TODAY
Call 623-7331 For Appointment

Miyuki Art Flower Studio



Learn to make your own Art Flowers... Register Now!

Morning & Evening Classes available, learn to combine design with subtle blends of color to produce the world's foremost - The Miyuki Art Flowers.

Call Now: 521-5512

The Extra Dimension

Le Jardin Academy

Le Jardin Academy is an outstanding and well-known Kailua school for students entering the pre-kindergarten through the eighth grade.

Le Jardin emphasizes solid academic programs in all basic subjects, including mathematics, general science, social studies, and English grammar. It is also known for its achievements in the teaching of reading, spelling, and the writing of English, through the use of the Spalding phonetic ap-

proach. The balanced curriculum also includes art, French, music and physical education.

Le Jardin Academy believes strongly in the development of consideration and sound personal values. The school keeps a close eye on the growth of each individual pupil in an atmosphere of happy, constructive learning.

For further information, call Mrs. Jean Bebb, director of admissions, at 261-1396.

Assets school opens Sept. 5

The Assets School for Gifted and Learning Disabled Children is currently accepting registration for the 1984-85 session which begins Sept. 5.

The school is open to all children in Hawaii who show a discrepancy between their capability and their grades or school achievement, or who are gifted or talented and, because of motivational concerns, need enrichment and/or acceleration not usually provided in the regular classroom.

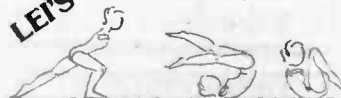
The program emphasis

is two-fold: academic enrichment and the enhancement of self-concept. The purpose of Assets is to return the student to the school of his/her choice with sufficient remediation and/or coping skills in the shortest time possible.

Support services include speech and language services, counseling and parent education seminars. For brochures and additional information, contact the school offices at 423-1720 or 422-5256.

School of Gymnastics

LET'S



SUMMER/FALL PROGRAM

Children 2 and older

Call 263-4552



WAIPAHU UCC CHILD CARE CENTER

- Year round, full day quality child care
- Complete preschool, day care
- New afterschool program
- Hot meals and snacks
- Working parents: We can arrange hours
- Admission without discrimination due to race, religion, sex, or national origin
- Located near Waipahu Post Office 94-330 Mokuola Street
- Nonprofit operation means reasonable rates
- No waiting list. Openings available now.

CALL 671-2389

YMCA committed to helping family life

The YMCA of Honolulu committed to family life by helping the individual family grow and function in their family unit. This commitment is not to a certain form or structure of family life. Instead, it is the support of people as they try to make their own unique family the best possible social structure for themselves.

Core Programs are: **Movement skills:** Motor skills are one of the children's most respected abilities during their elementary school years and contribute greatly toward their self-concept and social behavior. It is also at this age that the need for practice is crucial, in order for basic skills that have emerged to ever reach their full potential.

Physical fitness: Modern technology has created a lifestyle that people do not have to do much physical work. As a

result, people need fitness activities to develop a level of physical fitness needed for vigorous and healthy living. Children can begin to develop a lifetime of attitudes and behaviors conducive to good health and quality of life.

Safety awareness: Children are increasingly left at home without the supervision of an adult. Safety awareness and practices in the home, school, at play and on the streets can prevent accidents, teach children how to handle emergency situations and actually save a person's life.

Drama: Children lack the opportunity to explore their different feelings and emotions and to express them through use of their body. In drama, there are no right or wrong answers and children are able to gain successful experiences and increase their confidence.

Valuing Skills: Youth today are bombarded with a wide variety of value contents from the media, institutions, family, friends and experiences. What they often lack is the opportunity to sort out these value inputs, to prioritize them and decide which they want to act upon.

Learning center: Children need to be able to make independent choices and have the opportunity to develop

social and personal responsibility. The Learning Center is designed to meet these needs through its structure and activities and also provide study hall time for their homework and independent skills.

The YMCA after school program is conducted out of 26 centers throughout Oahu. Participants must be five years old and continues through sixth grade. There will be one certified leader per 15-20

students. The number of students per leader is determined by age grouping. Program is conducted from Sept. 5, 1984 through June 7, 1985. The YMCA operates each day that the school is in session, and begins promptly after dismissal of students.

Parents should call the following YMCA Branches for further information: Nuuanu YMCA: 536-3556; Kaimuki-Waiālae YMCA: 737-5544; Windward YMCA: 261-0808; Kāhili YMCA: 848-2494; West-Oahu YMCA: 622-4146.

HME GRADES K-8
Enrollment Limited
Registration now in progress

**HAWAIIAN MISSION
ELEMENTARY SCHOOL**
1415 MAKIKI ST. 949-2033

- Suzuki Violin • Christian Education
- Band • Orchestra, Piano & Instrument Lessons
- Hot Lunches

A SEVENTH-DAY ADVENTIST SCHOOL

AUTO MECHANICS
Learn Auto Mechanics & Be Ready for a Job with a future in 1 year.
Register Now

Day Classes Begin August 7
Nite Classes Begin August 8

Limited Openings Call or Write Today!

NEW YORK TECHNICAL
Institute Building, (Founded 1910)
21 yrs. in Honolulu's oldest private auto mechanic's school
1375 Dillingham 841-5827 DOE lic.

VARSITY HIGH SCHOOL
Grades 7-12
2 to 6 students per class
Register Now For Summer Sessions & Fall

SINCE 1974 947-4430

Division of Competency
Tutoring Center, Inc.
(Tutoring All Subjects - All Ages)

HAWAIIAN SCHOOL OF REAL ESTATE
(Established 1972)

Starting August 13 for Sept. 22 Salesmen's Exam

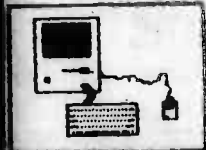
Instructor: M. Russell Goode, Jr.,
Realtor, GRI, MBA
Classroom - 615 Piikoi St.
For information Call

531-0055

FREE Parking
VISA & MasterCard
accepted

(Ask about our course
guarantee and tuition
reimbursement program.)

The Computer School at Koko Marina HAWAII KAI



Limited space
still available
in the last
Summer
School Session

AUGUST 6 THROUGH 31

• 2 DAY PROGRAMS TU/THURS
• 3 DAY PROGRAMS M/W/F

**SATURDAY KIDS CLASSES
CLASSES FOR ADULTS
BUSINESS SEMINARS
CONSULTING SERVICES
COMPUTER SUPPLIES**

JLT Enterprises, Inc.

395-8579

396-6400

FALL SESSION

- Diagnostic Testing
- Individual and Small Groups - All Ages
- Reading, Spelling, Math, Composition, and Computer Science
- Learning and Motivation
- Exam Prep-GED, SAT, SSAT, TDEFL

595-4781

Carol Wood
M Ed
Director

**LDL LEARNING DEVELOPMENT
RESOURCES**

Honolulu, Aiea, Haina, Kahala, Kailua, Pearl City

ACADEMY SCHOOL

FALL REGISTRATION
INDIVIDUALIZED PROGRAMMING
2 to 5 STUDENTS PER CLASS

Carol Wood, Director 595-4781, 732-6081

**LDL LEARNING
DEVELOPMENT RESOURCES**



Teaching Essential
Communication and
Speaking Skills

CREATIVE THEATER CLASSES

3 1/2 thru 13 Years

Now Enrolling for Fall
10% Discount Early Enrollment

Mililani, Waiālae, Pearl City, Kailua, Pearl Harbor

CREATIVE EXPRESSION 3 1/2-7 yrs.
MIME and COMEDY 7 1/2-13 yrs.
**VIDEO PRODUCTION and
PERFORMANCE SKILLS** 7 1/2-13 yrs.

Building Confidence (Special Assistance
Always Given Shy Child)

PH. 941-2798, 737-5544, 261-0808

Creative theater classes offered for ages 3-13

a caring, quality education in beautiful Manoa Valley

ST. FRANCIS CATHOLIC SCHOOL GIRLS

COLLEGE PREP • GRADES 7-12 • SMALL CLASSES

LIMITED OPENINGS AVAILABLE

in the Junior High & Grades 10-11

ADMISSIONS — PHONE 988-4111

Creative Theater Classes for children three years, four months through 13 years teaches essential communication and thinking skills by using playful activities.

This school year Creative Theater provides additional Creative Expression classes in some of its island locations to reduce its already low student-teacher ratio.

Subjects available for children are comedy and mime, video production and communication skills and creative expression.

Island locations are Mililani, Waiālae, Kailua, Pearl City and Pearl Harbor. The mime and comedy students do shows for the public and learn valuable thinking skills, i.e., thinking in specifics while having

and providing enjoyment. The children are taught classic mime illusions and then form them into humorous pantomimes.

All Creative Theater classes, which are held after school or Saturdays, are action oriented. The creative expression little ones (3½-7 year-old) will do playlets based on Three Bears, Little Mr. and Ms. Muffet, Three Kittens and many others. Children learn to express feelings acceptably and clearly and to speak well in front of others.

Shy children are always given special assistance. The performance and video production students (7½-13 year old) will perform and televise a folktale and do a show for their families

in early December.

Enrollment is now being accepted for classes beginning the week of Sept. 17. Costs are reasonable but there's a 10 percent discount for early enrollment.

Classes are held at YMCA's and other community centers throughout Oahu. Creative Theater's emphasis on verbal and written communication skills develops a versatile and confident child.

Through playful activities the instructor stresses the responsibility of communicating well.

Sound theater performance skills are also taught for those youth interested in performing. Phone 941-2798, 737-5544 or 261-0808 for detailed information.

Register Now! Limited Space

Y After **SCHOOL**
program
YMCA OF HONOLULU

BEGINS WED. SEPT. 5, 1984 and runs thru
FOR CHILDREN 5 yrs old thru 6th Grade Fri. June 7, 1985

Call the following YMCA Branches to enroll your child for a particular center of your choice and for further information.

NUUANU BRANCH:
Ph: 536-3556

Nuuanu Branch
Pauoa Elem. Sch.
Manoa Elem. Sch.
Lincoln Elem. Sch.

KAIMUKI-WAIALAE BRANCH:
Ph: 737-5544

Kaimuki-Waiālae Branch
Aliiolani Elem. Sch.
Wallupe Elem. Sch.

WINDWARD BRANCH:
Ph: 261-0808

Windward Branch
Enchanted Hills Elem. Sch.
Kaneohe Elem. Sch.
Kapunahala Elem. Sch.
Ben Parker Elem. Sch.
Heeia Elem. Sch.

KALIHI BRANCH:
Ph: 848-2494

Kalihi Branch
Alvah Scott Elem. Sch.
Kapalama Elem. Sch.
Gus Webling Elem. Sch.
Red Hill Elem. Sch.
Salt Lake Elem. Sch.

WEST-OAHU BRANCH:
Ph: 622-4146

Kipapa Elem. Sch.
Kaneohe Elem. Sch.
Momiāni Elem. Sch.
Waiau Elem. Sch.
Waimalu Elem. Sch.
Mauka Lani Elem. Sch.
Waipahu Elem. Sch.

ANOTHER QUALITY PROGRAM BY THE YMCA OF HONOLULU
WHERE QUALITY IS OUR PRODUCT

YMCA of Honolulu

KAILUA CHURCH AND CHRISTIAN SCHOOL

**CHRISTIAN EDUCATION . . . IT PAYS . . .
ETERNAL DIVIDENDS**

- GRADES PRE-K-12
- SMALL CLASSES
- LOW TUITION
- AFTER SCHOOL CARE

- CARING TEACHERS
- FAMILY DISCOUNTS
- COUNSELING
- GOOD CITIZENSHIP

CLASSES START AUG. 13, 1984
201 N. KAINALU DRIVE, KAILUA, 261-4641

HAWAII CHILD CENTERS

PREPARING CHILDREN FOR KINDERGARTEN

- Learning Center Pre-School
- Transportation
- After School Care
- Day Care
- Open from 8 to 6
- Ages From 2 Years
- Hot lunch available or home lunch



- 1130, 1230, 3, 430 or 6 programs
- Reading Readiness
- Number Readiness
- Science • Arts & Crafts
- Excursions • Music
- Cultural Events

- Tuition & Lunch rates based on income.

LEEWARD SIDE

Salt Lake
3215 Ala Ilima
839-4977
Waipahu
94-130 Mokuāua Street
677-3573
Mililani
94-359 Makohāni Street
623-6557

WINDWARD SIDE

Enchanted Lake
1425 Keolu Drive
262-4955
Kailua
1276 Kailua Road
261-6888
Lanikai
1333 Mokuāua Drive
261-9151

Hawaii Child Centers

A non-profit educational organization
MAIN OFFICE: 262-4538

REGISTER NOW FOR THE FALL TO ENSURE A SPACE

HPC offers small classes liberal arts degree

Hawaii Pacific College, the largest private college university in Hawaii, is an accredited, coeducational, four-year, independent institution located in downtown Honolulu. Classes are small, giving the student the opportunity to meet with faculty members on a regular basis.

If you are interested in pursuing your chosen career while still going to school — or even if you haven't chosen your career yet — HPC's Career Development Program will help you get a paying job and coordinate your program of studies at the same time. You can earn

up to 12 credits toward your degree through your job.

You can earn the following degrees at Hawaii Pacific College: Bachelor of Science in Business Administration, with majors in Accounting, Computer Information Systems, Economics, Travel Industry Management, Entrepreneurial Studies, and Management; Bachelor of Science in Computer Science; Bachelor of Arts in Liberal Arts, with majors in American Studies, English, Humanities, Social Sciences, and Teaching English as a Second Language; Associ-

ate of Science in Management; Associate of Science in Data Processing Technology; and Associate in Supervisory Leadership.

Hawaii Pacific has an English Foundations Program, a series of credit courses, designed to improve your English proficiency and help you better manage your

college studies.

Hawaii Pacific College offers a wide variety of student activities: varsity and club sports (basketball, baseball, volleyball, softball, tennis and golf for men and women; more than 20 student clubs; several major honor societies; two service organizations; a student

newspaper and literary magazine; and many student activities, including boat rides, hikes, picnics, dances, and luaus.

Hawaii Pacific offers a full range of financial aid, as well as some academic scholarships, which you may be interested in asking about if your grade-point average is 3.5

or better.

The best way to find out about Hawaii Pacific College is to visit HPC's downtown campus. The Admissions Director, Don Barlow, would be very pleased to meet with you and show you around the campus. Call the college at 544-0249 or 544-0200.

Hawaii Pacific College

Business Administration, Computer Science and Liberal Arts

REGISTRATION NOW OPEN FOR FALL SEMESTER

Hawaii Pacific College is a four-year, nonprofit, institution conveniently located in downtown Honolulu, HPC, accredited by the Accrediting Commission for Senior Colleges and Universities of the Western Association of Schools and Colleges, is offering over 350 courses for degree-seeking students and adult students seeking self-improvement. Many courses are offered in the day and evening. Ask about our Financial Aid Program (money is still available). HPC will help you find a job through its Cooperative Education Program. The following courses are approved for V.A. benefits. Students may register now at HPC, 1164 Bishop Street, 2nd Floor. FOR INFORMATION, CALL 544-0249 OR 544-0200. REGISTER NOW!

SELECTED FALL SEMESTER COURSES (SEPTEMBER 4 - DECEMBER 15, 1984)

ACCTG 200	Principles of Accounting I	MWF	12:00-12:55 p.m.
ACCTG 200	Principles of Accounting I	T	5:15- 8:10 p.m.
ACCTG 300	Intermediate Accounting	MW	5:15- 6:40 p.m.
ACCTG 320	Managerial Accounting	W	5:15- 8:10 p.m.
ACCTG 330	Federal Income Tax—Individuals	F	5:15- 8:10 p.m.
ACCTG 450	Computer Applications to Accounting	MWF	12:00-12:55 p.m.
ANTH 370	Culture and Communication	TTH	9:15-10:40 a.m.
BL 300	Business Law I	W	5:15- 8:10 p.m.
CSCI 100	Introduction to Computer-Based Systems	MWF	12:00-12:55 p.m.
CSCI 100	Introduction to Computer-Based Systems	M	5:15- 8:10 p.m.
CSCI 301	Interactive Programming in BASIC	W	5:15- 8:10 p.m.
CSCI 341	FORTRAN Programming	TH	5:15- 8:10 p.m.
CSCI 351	COBOL Language and Programming	T	5:15- 8:10 p.m.
CSCI 371	PASCAL	S	9:00-11:55 a.m.
CSCI 402	Software Theory and Design	S	12:00- 2:55 p.m.
ECON 210	Introduction to Microeconomics	TTH	12:25- 1:50 p.m.
ECON 215	Introduction to Macroeconomics	TTH	9:15-10:40 a.m.
ECON 405	International Trade and Finance	MWF	1:05- 2:00 p.m.
FIN 300	Business Finance	W	5:15- 8:10 p.m.
FIN 450	Public Finance	M	5:15- 8:10 p.m.
FR 101	Beginning French I	MWF	10:00-11:20 a.m.
HUM 330	Introduction to Japanese Culture and Society	TTH	12:25- 1:50 p.m.
JPE 101	Beginning Japanese I	TTH	10:00-11:55 a.m.
MATH 204	Calculus I	TTH	6:45- 8:10 p.m.
MGMT 100	Organization and Management	W	5:15- 8:10 p.m.
MGMT 200	Business Communications	M	5:15- 8:10 p.m.
MGMT 335	Small Business Management	TTH	5:10- 6:35 p.m.
MGTSCT 220	Mathematics for Management	TTH	5:10- 6:35 p.m.
MKTG 300	Principles of Marketing	TH	5:15- 8:10 p.m.
POLSCI 390	Elections in Hawaii	F	5:15- 8:10 p.m.
POLSCI 420	International Law	W	5:15- 8:10 p.m.
SCI 400	Science and the Modern Prospect	M	5:15- 8:10 p.m.
TIM 100	Management of Travel Industry Institutions	TTH	5:10- 6:35 p.m.
TIM 360	Destination Area Development	W	5:15- 8:10 p.m.

MORE THAN 350 COURSES ARE BEING OFFERED.
FOR A COMPLETE SCHEDULE CALL 544-0249 OR 544-0200.

HOW TO REGISTER

The Registrar's Office is located on the second floor at 1164 Bishop Street. You may register in person any day of the week, Monday through Friday, from 8:00 a.m. to 5:00 p.m. If you are interested in part-time attendance only, call the Registrar's Office at 544-0239 or visit the Registrar's Office in person. We will be happy to mail to you registration and admission forms for your convenience.

FULL-TIME STUDENT APPLICATIONS ARE NOW BEING ACCEPTED FOR THE COMING FALL SEMESTER. PLEASE CALL THE ADMISSIONS OFFICE AT 544-0249 OR 544-0200 FOR INFORMATION AND APPLICATION FORMS. HPC'S ADMISSIONS OFFICE IS LOCATED ON THE FIFTH FLOOR AT 1164 BISHOP STREET.

HAWAII PACIFIC COLLEGE

B.A. Degree in Business Administration and Computer Science
B.S. Degree in Liberal Arts

REGISTRATION OPEN NOW—CALL 544-0249 OR 544-0200



ISLAND EDUCATION CONSULTANTS
633 Keolu Dr.,
Kailua, Hi. 96734

SUMMER/FALL INSTRUCTION IN:
Reading • Computers (Word Processing, Logo, Programming) • Math
• Research Papers • Written Language • Typing • ESL • SAT/SSAT/GED
Preparation • Career Guidance • Spelling • Study Skills

**Learning disabled/Gifted/Remedial
Diagnostic Testing**
(ELEMENTARY TO ADULTS)
Jane Stitt, M.A. Education
Call 262-6163 to set up appt. for FREE Consultation

**Sewing Classes in
PEARL CITY**
Personalized Instruction for
Basic, Intermediate & Advanced.
Limited Enrollment

FALL SESSIONS
Starting Sept. 10 on
Mon., Tues. or Thurs 8:30-11:30
Wednesday Only 3:00-5:30
Arrange your own time.

**CHIC MODE
DRESSES**
Owner Manager-Gertrude Nakatsuka
765 Kam Hwy., Suite 207
455-2045

**KAILUA BAPTIST CHURCH
CHRISTIAN PRESCHOOL**
1080 Kailua Rd.
NOW ENROLLING FOR FALL 1984
Hours: 8:30 to 11:30 a.m.

- Small classes
- Nutritious snacks
- Loving Christian staff members
- Before and after school care available

5 Day Program \$85
3 Day Program \$55
2 Day Program \$40
Registration Fee \$20
262-6938

